

KENTUCKY DEPARTMENT OF HIGHWAYS

OLD TAYLORSVILLE ROAD OVERPASS

SHELBY COUNTY

LOUISVILLE - LEXINGTON - CATLETTSBURG

GENERAL NOTE

SPECIFICATIONS: KENTUCKY DEPARTMENT OF HIGHWAYS, 1956 STANDARD WITH AMENDMENTS.

DESIGN LOAD: BRIDGE DESIGNED FOR H20-WH LOADING AS SPECIFIED IN A.S.H.C. 1957 SPECIFICATIONS.

CONCRETE: CLASS "A" CONCRETE TO BE USED THROUGHOUT. THE CONTRACTOR SHALL FURNISH SUFFICIENT CONCRETE TO POUR BETWEEN THE CONSTRUCTION JOINTS AS SHOWN ON THE PLANS IN ONE CONTINUOUS POUR.

REINFORCEMENT: DIMENSIONS FROM FACE OF CONCRETE TO BARS ARE CLEAR DISTANCES UNLESS OTHERWISE SHOWN. DIMENSIONS FOR BAR SPACINGS ARE DISTANCES CENTER TO CENTER OF BARS.

FALSEWORK: THE FALSEWORK SUPPORTING BEAMS AND SLABS OF A CONTINUOUS UNIT SHALL NOT BE REMOVED UNTIL ALL BEAMS AND SLABS IN ALL SPANS OF THAT UNIT HAVE BEEN POURED FOR AT LEAST TWENTY-ONE (21) DAYS.

EXPANSION JOINT MATERIAL: COPPER STRIP AND TAR PAPER. THE COST OF THESE ITEMS IS TO BE INCLUDED IN THE UNIT PRICE BID FOR CLASS "A" CONCRETE.

SLOPE PROTECTION: FOR 4" CONCRETE SLOPE WALL, SEE STANDARD DRAWING 10-05.

BEVELED EDGES: ALL EXPOSED EDGES SHALL BE BEVELED 7/8" UNLESS OTHERWISE NOTED.

TAR PAPER: TO BE COMMERCIAL GRADE TAR PAPER OR ROOFING FELT, APPROXIMATELY 1/16" THICK.

STRUCTURAL STEEL: THE UNIT PRICE BID FOR STRUCTURAL STEEL INCLUDES ALL STRUCTURAL STEEL, BOLTS, NUTS, PINS, ROLLERS, LEAD PLATES AND PINS, LEAD FOR ANCHOR BOLT PACKING.

REFERENCE & ESTIMATE OF QUANTITIES

ITEM	SHEET NO.	CONCRETE CLASS.	REINFORCEMENT	STRUCTURE		EXCAV.	ASUMING	NO. 4	SPECIAL	6" CO.	METAL PIPE	STEEL
				COMMON	S.P.							
LAYOUT	2											
CONCRETE	3	60	7357	70	50							
REINFORCEMENT	4	27	4900		50							
EXCAVATION	5	27	4900		40							
FORMS	5	30	8700	10	40							
EXPANSION JOINT	6	18	3400	60	35							
BEVELED EDGES	7				15							
EXPANSION JOINT MATERIAL	16											
EXPANSION JOINT MATERIAL	20											
EXPANSION JOINT MATERIAL	21											
EXPANSION JOINT MATERIAL	22											
EXPANSION JOINT MATERIAL	23											
EXPANSION JOINT MATERIAL	24											
EXPANSION JOINT MATERIAL	25											
EXPANSION JOINT MATERIAL	26											
EXPANSION JOINT MATERIAL	27											
EXPANSION JOINT MATERIAL	28											
EXPANSION JOINT MATERIAL	29											
EXPANSION JOINT MATERIAL	30											
EXPANSION JOINT MATERIAL	31											
EXPANSION JOINT MATERIAL	32											
EXPANSION JOINT MATERIAL	33											
EXPANSION JOINT MATERIAL	34											
EXPANSION JOINT MATERIAL	35											
EXPANSION JOINT MATERIAL	36											
EXPANSION JOINT MATERIAL	37											
EXPANSION JOINT MATERIAL	38											
EXPANSION JOINT MATERIAL	39											
EXPANSION JOINT MATERIAL	40											
EXPANSION JOINT MATERIAL	41											
EXPANSION JOINT MATERIAL	42											
EXPANSION JOINT MATERIAL	43											
EXPANSION JOINT MATERIAL	44											
EXPANSION JOINT MATERIAL	45											
EXPANSION JOINT MATERIAL	46											
EXPANSION JOINT MATERIAL	47											
EXPANSION JOINT MATERIAL	48											
EXPANSION JOINT MATERIAL	49											
EXPANSION JOINT MATERIAL	50											
EXPANSION JOINT MATERIAL	51											
EXPANSION JOINT MATERIAL	52											
EXPANSION JOINT MATERIAL	53											
EXPANSION JOINT MATERIAL	54											
EXPANSION JOINT MATERIAL	55											
EXPANSION JOINT MATERIAL	56											
EXPANSION JOINT MATERIAL	57											
EXPANSION JOINT MATERIAL	58											
EXPANSION JOINT MATERIAL	59											
EXPANSION JOINT MATERIAL	60											
EXPANSION JOINT MATERIAL	61											
EXPANSION JOINT MATERIAL	62											
EXPANSION JOINT MATERIAL	63											
EXPANSION JOINT MATERIAL	64											
EXPANSION JOINT MATERIAL	65											
EXPANSION JOINT MATERIAL	66											
EXPANSION JOINT MATERIAL	67											
EXPANSION JOINT MATERIAL	68											
EXPANSION JOINT MATERIAL	69											
EXPANSION JOINT MATERIAL	70											
EXPANSION JOINT MATERIAL	71											
EXPANSION JOINT MATERIAL	72											
EXPANSION JOINT MATERIAL	73											
EXPANSION JOINT MATERIAL	74											
EXPANSION JOINT MATERIAL	75											
EXPANSION JOINT MATERIAL	76											
EXPANSION JOINT MATERIAL	77											
EXPANSION JOINT MATERIAL	78											
EXPANSION JOINT MATERIAL	79											
EXPANSION JOINT MATERIAL	80											
EXPANSION JOINT MATERIAL	81											
EXPANSION JOINT MATERIAL	82											
EXPANSION JOINT MATERIAL	83											
EXPANSION JOINT MATERIAL	84											
EXPANSION JOINT MATERIAL	85											
EXPANSION JOINT MATERIAL	86											
EXPANSION JOINT MATERIAL	87											
EXPANSION JOINT MATERIAL	88											
EXPANSION JOINT MATERIAL	89											
EXPANSION JOINT MATERIAL	90											
EXPANSION JOINT MATERIAL	91											
EXPANSION JOINT MATERIAL	92											
EXPANSION JOINT MATERIAL	93											
EXPANSION JOINT MATERIAL	94											
EXPANSION JOINT MATERIAL	95											
EXPANSION JOINT MATERIAL	96											
EXPANSION JOINT MATERIAL	97											
EXPANSION JOINT MATERIAL	98											
EXPANSION JOINT MATERIAL	99											
EXPANSION JOINT MATERIAL	100											
TOTAL			74,357	140	180	500						

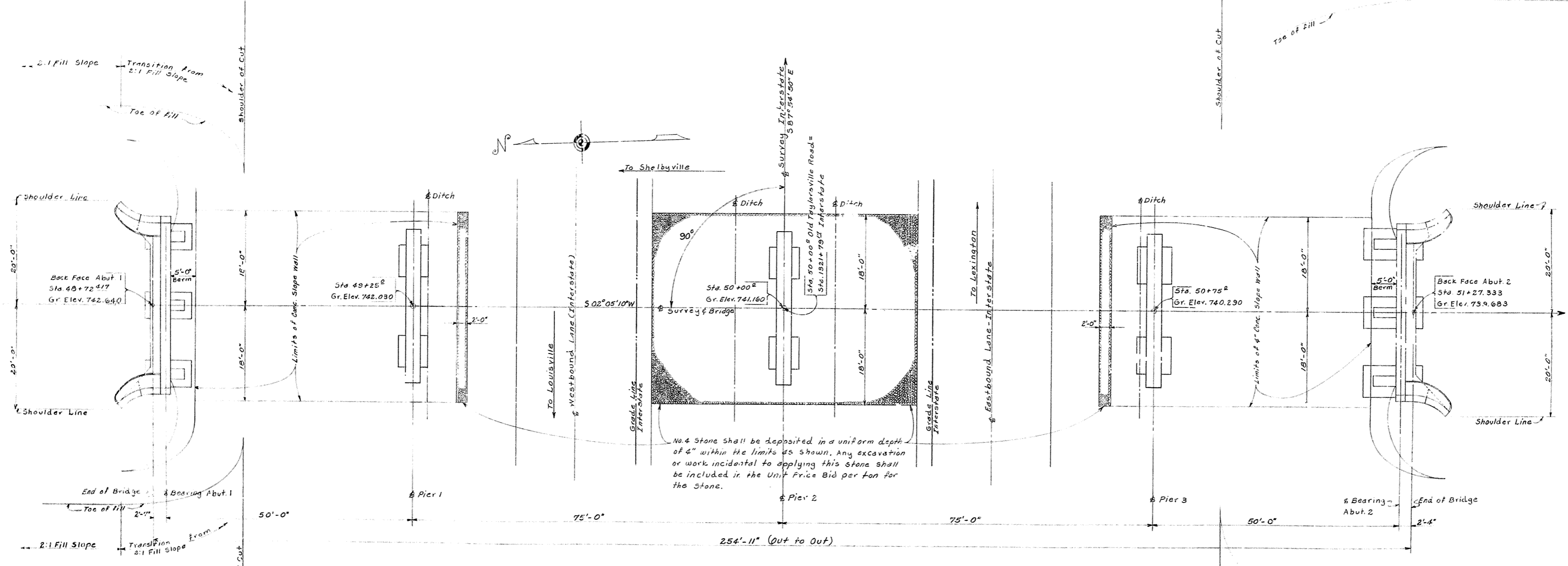
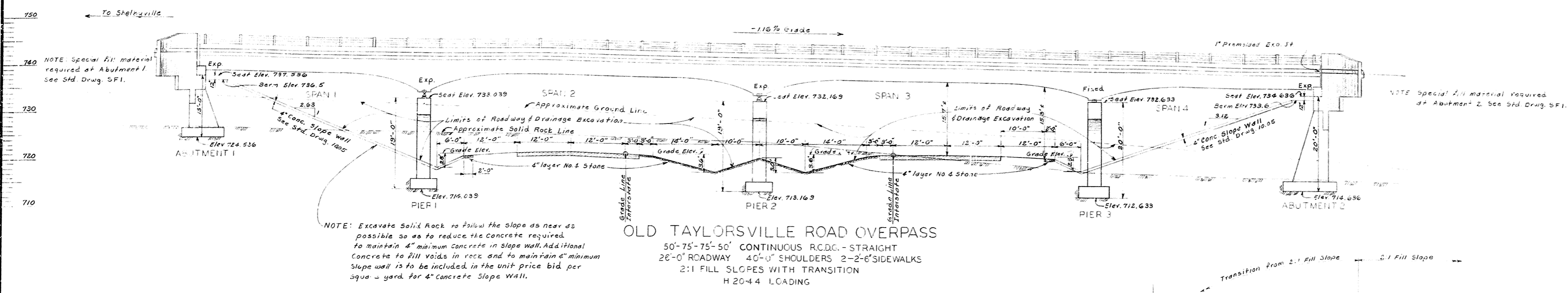
BILL OF INCIDENTAL MATERIALS

NO. 4	1.00	1.00
SPECIAL	1.00	1.00
6" CO.	1.00	1.00
METAL PIPE	1.00	1.00
STEEL	1.00	1.00

COMMONWEALTH OF KENTUCKY
DEPARTMENT OF HIGHWAYS
FRANKFORT
COUNTY OF
SHELBY
LOUISVILLE - LEXINGTON - CATLETTSBURG
ROAD
STATION 131+00 TO 131+50 STATE PROJECT NO.
BRIDGE NUMBER 106-286-106

BRIDGE

FED. ROAD DIST.	STATE	FED. AID PROJ. NO.	FISCAL YEAR	SHEET NO.	TOTAL SHEETS
7	KY.				



DESIGNED BY: [Signature] DATE: 12-1-58
 CHECKED BY: G.S. Cook DATE: 12-1-58
 TRACED BY: [Signature] DATE: 12-1-58

LAYOUT

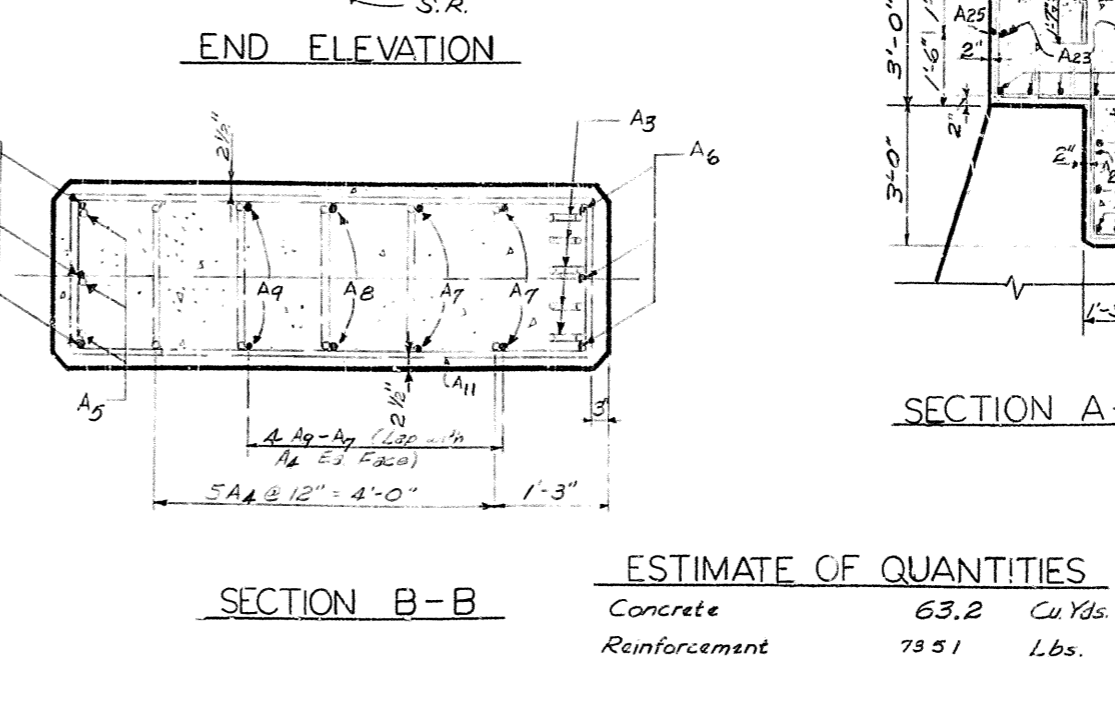
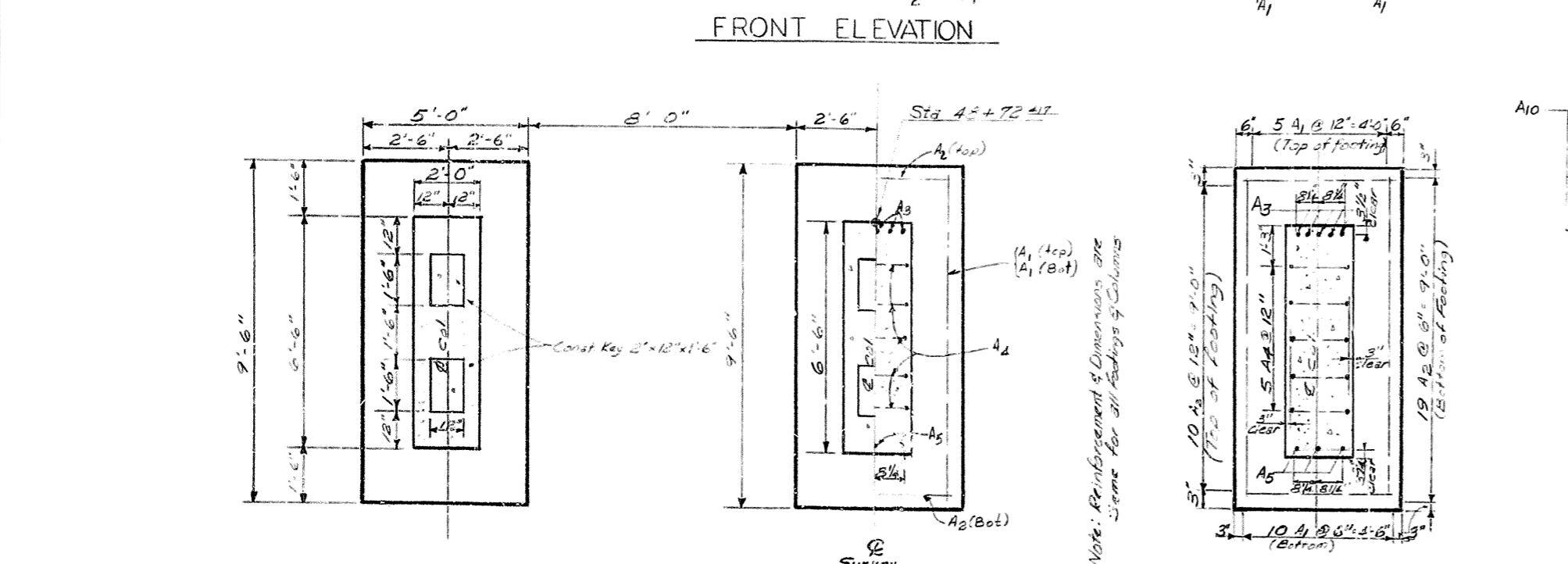
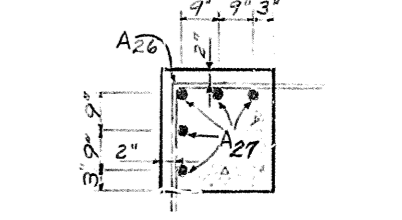
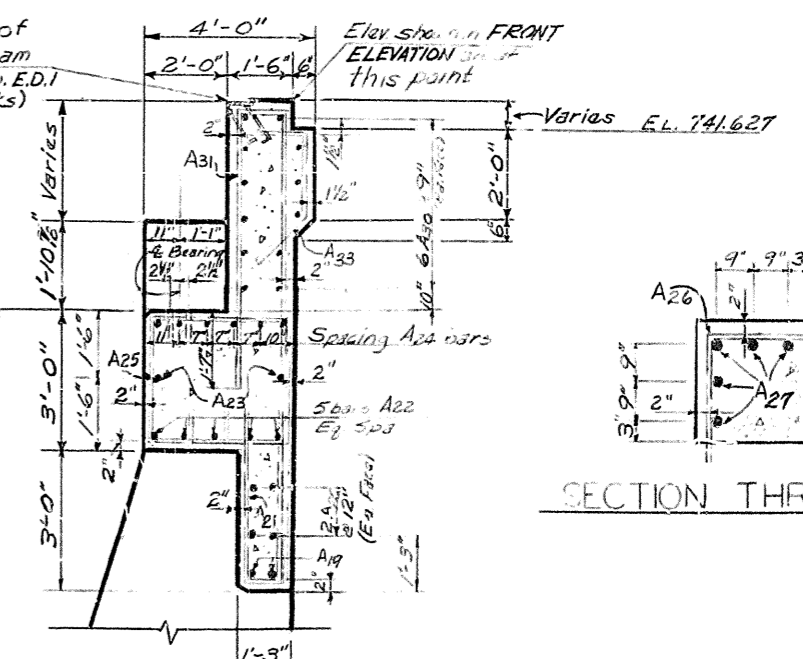
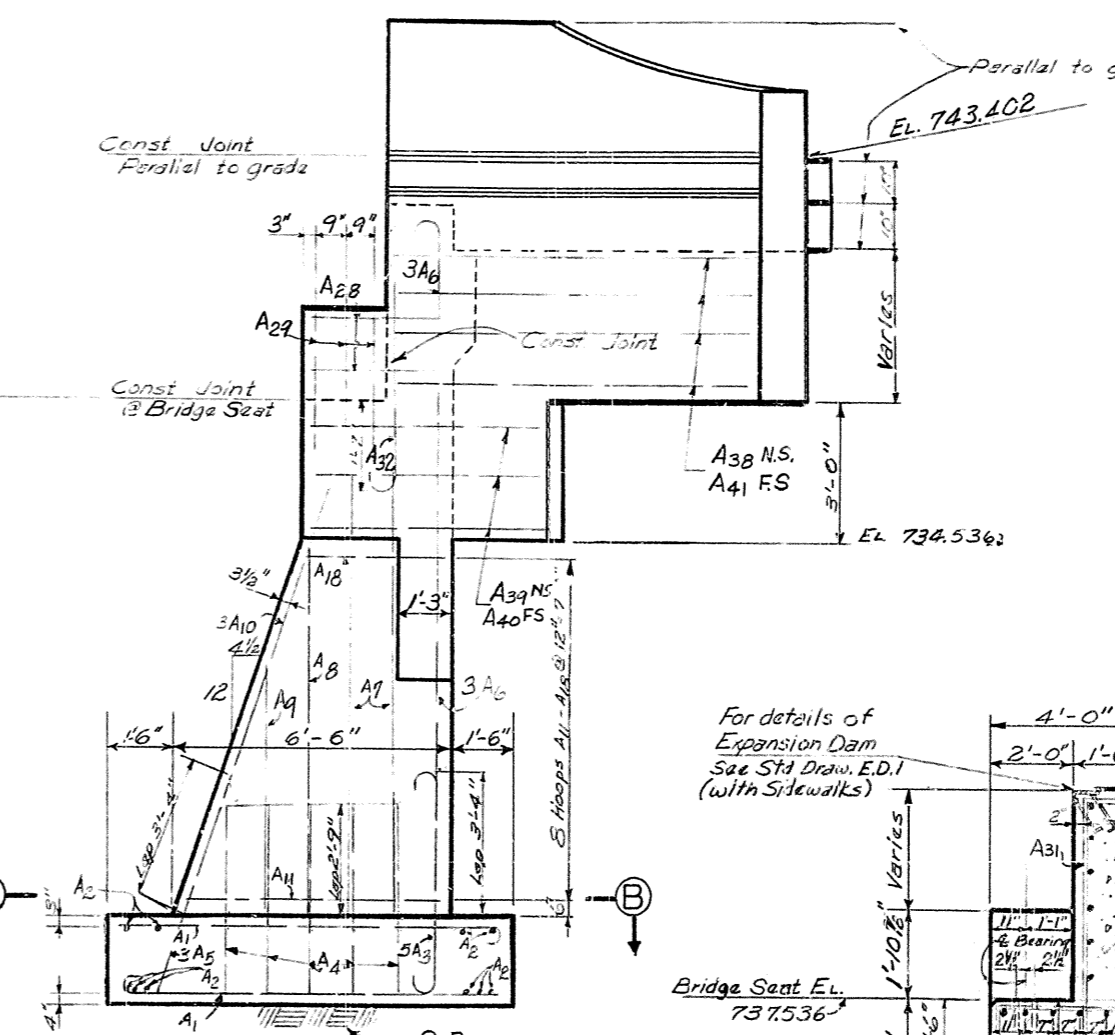
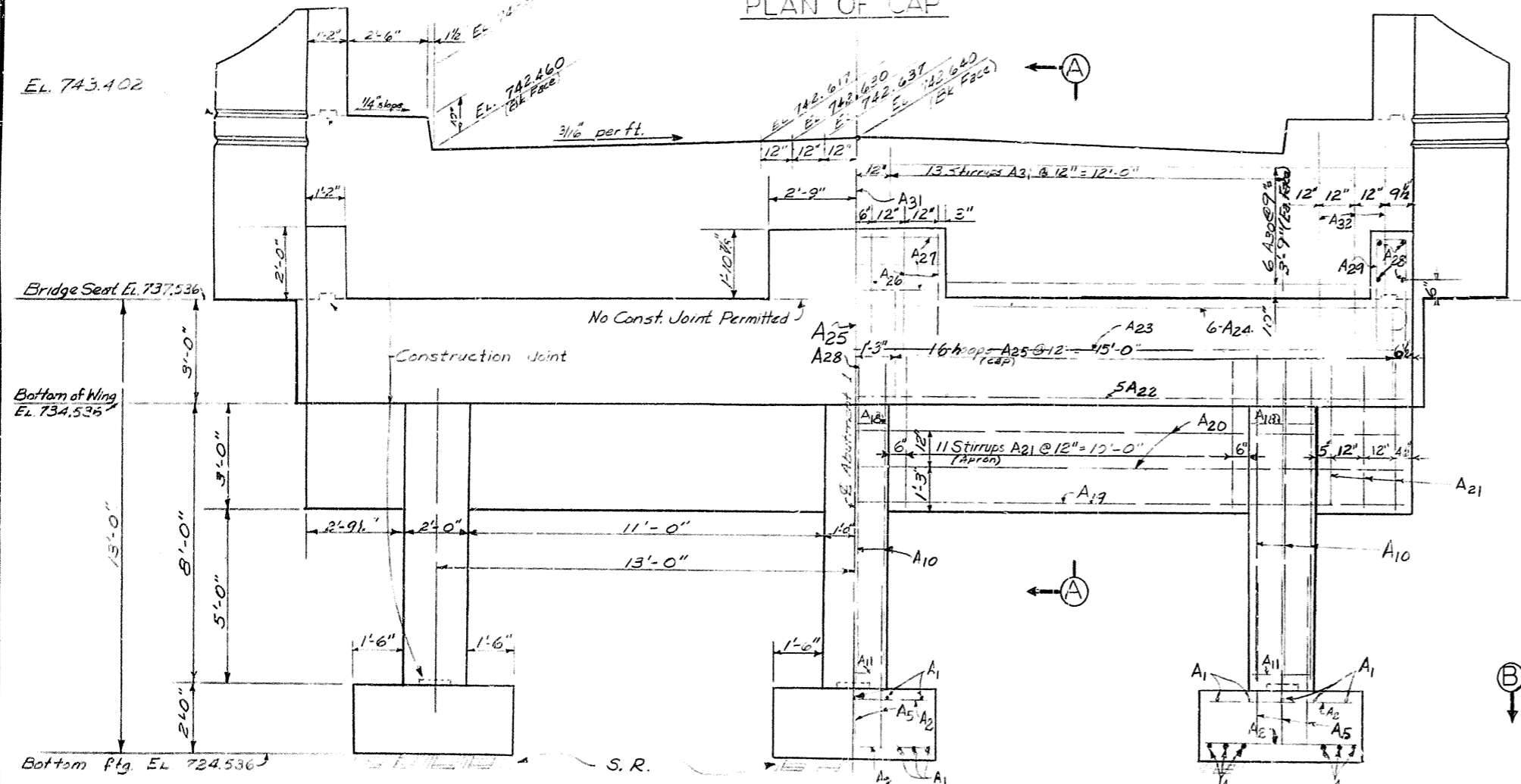
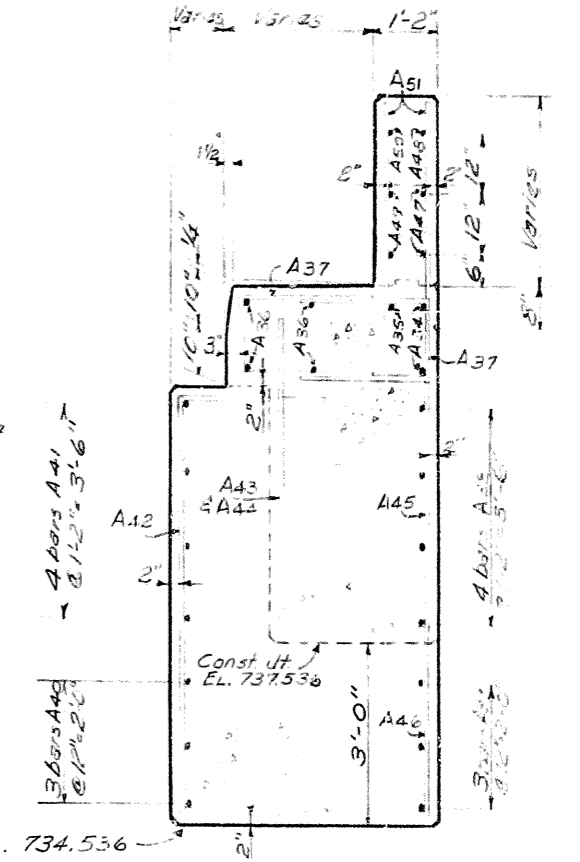
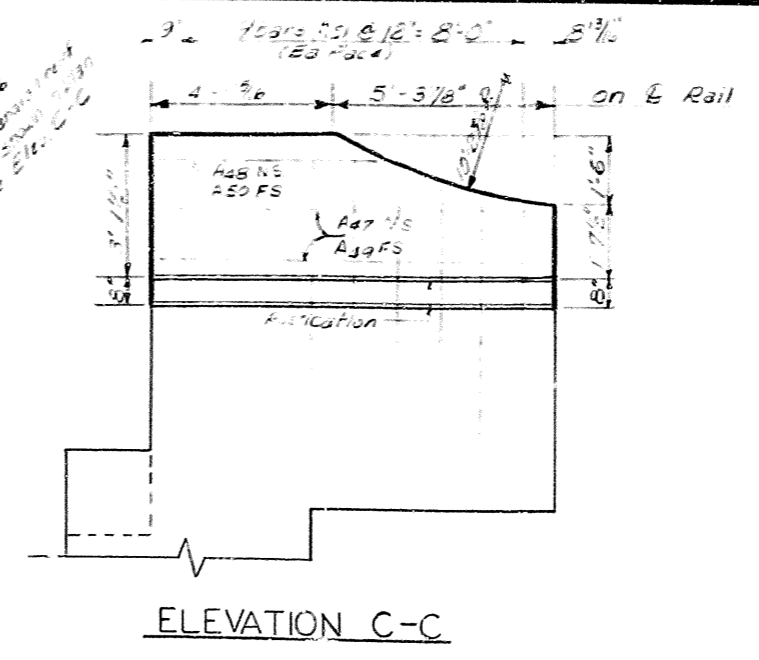
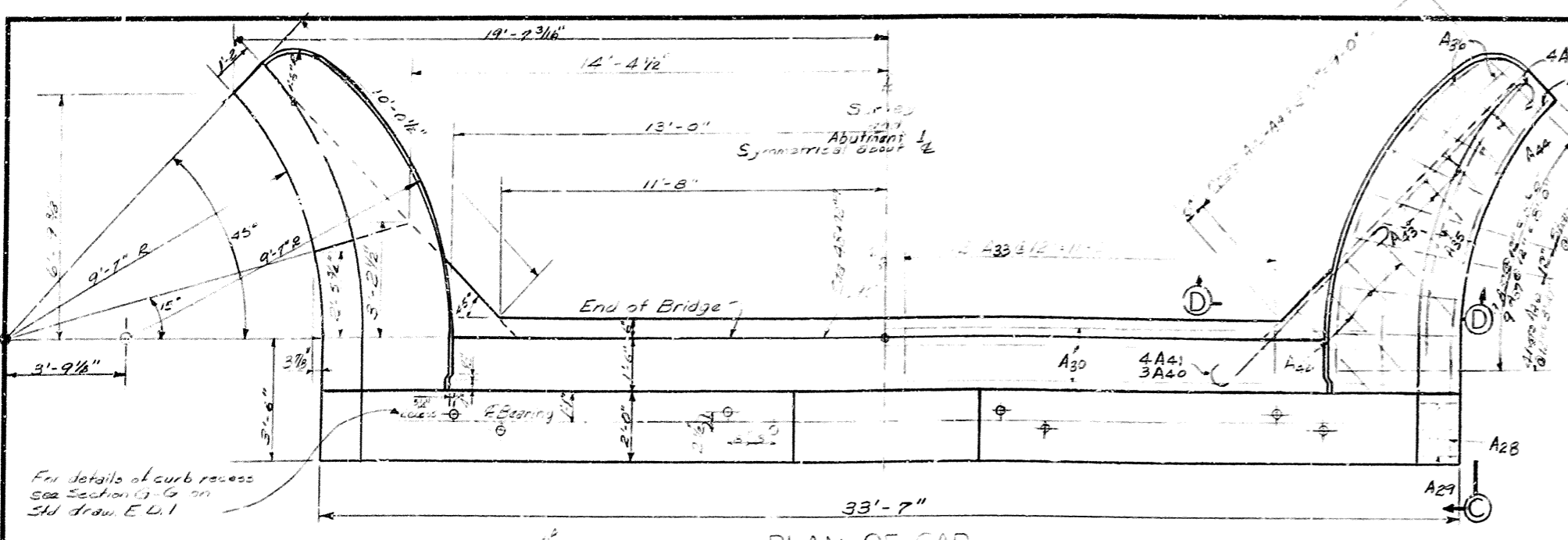
OLD TAYLORSVILLE ROAD OVER INTERSTATE SHEET 2

COMMONWEALTH OF KENTUCKY
 DEPARTMENT OF HIGHWAYS
 FRANKFORT
 COUNTY OF
 SHELBY
 LOUISVILLE - LEXINGTON - CATLETTSBURG

50+00^R = ROAD
 STATION 1321+79¹² INTERSTATE PROJECT NO.

BRIDGE NUMBER	DRAWING NO.	INDEX
106-296-461	13755	

FED. ROAD DIST.	STATE	FED. AID PROJ. NO.	FISCAL YEAR	SHEET NO.	TOTAL SHEETS
7	KY.				



ESTIMATE OF QUANTITIES

Concrete	63.2	Cu Yds.
Reinforcement	7551	Lbs.

ABUTMENT NO. 1

OLD TAYLOESVILLE RD. OVER INTERSTATE Sheet 3

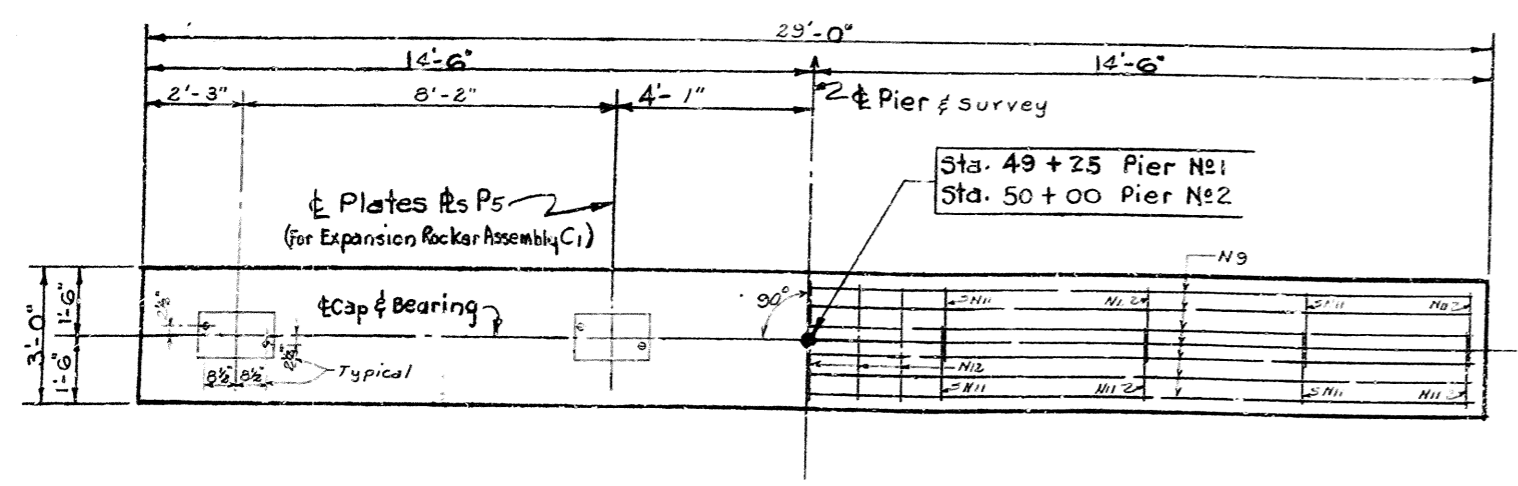
COMMONWEALTH OF KENTUCKY
 DEPARTMENT OF HIGHWAYS
 FRANKFORT
 COUNTY OF
 SHELBY
 LOUISVILLE-LEXINGTON-
 CATLETTSBURG
 50100 Old Tayloesville ROAD
 STATION 1321+77.17 Interstate PROJECT NO.

BRIDGE NUMBER	13755	INDEX
DRAWING NO.		

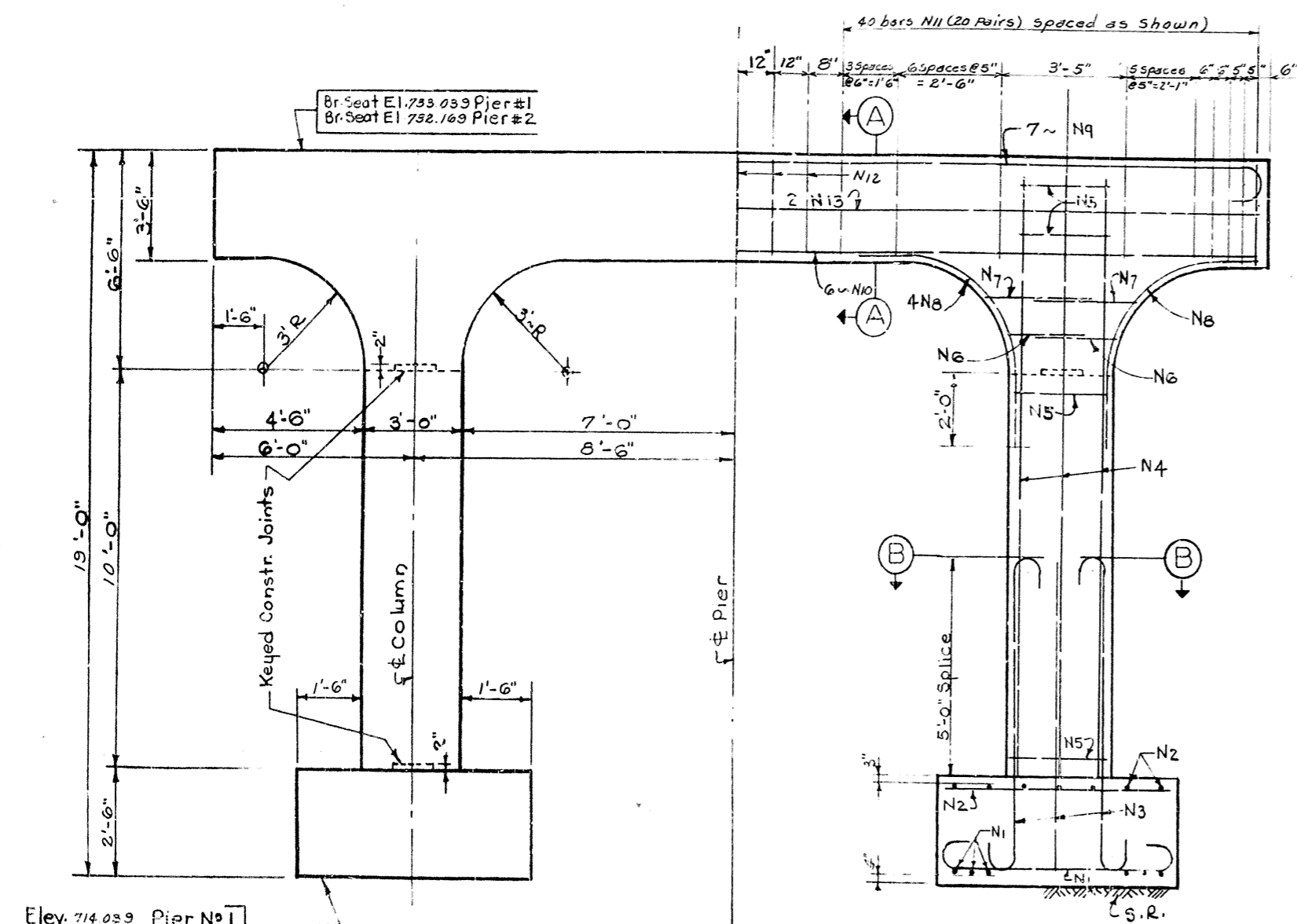
DESIGNED BY: MILLER'S
 CHECKED BY: MILLER'S
 DATE: _____
 REVISIONS: _____

Note: Reinforcement & Dimensions are Same for all Footings & Columns

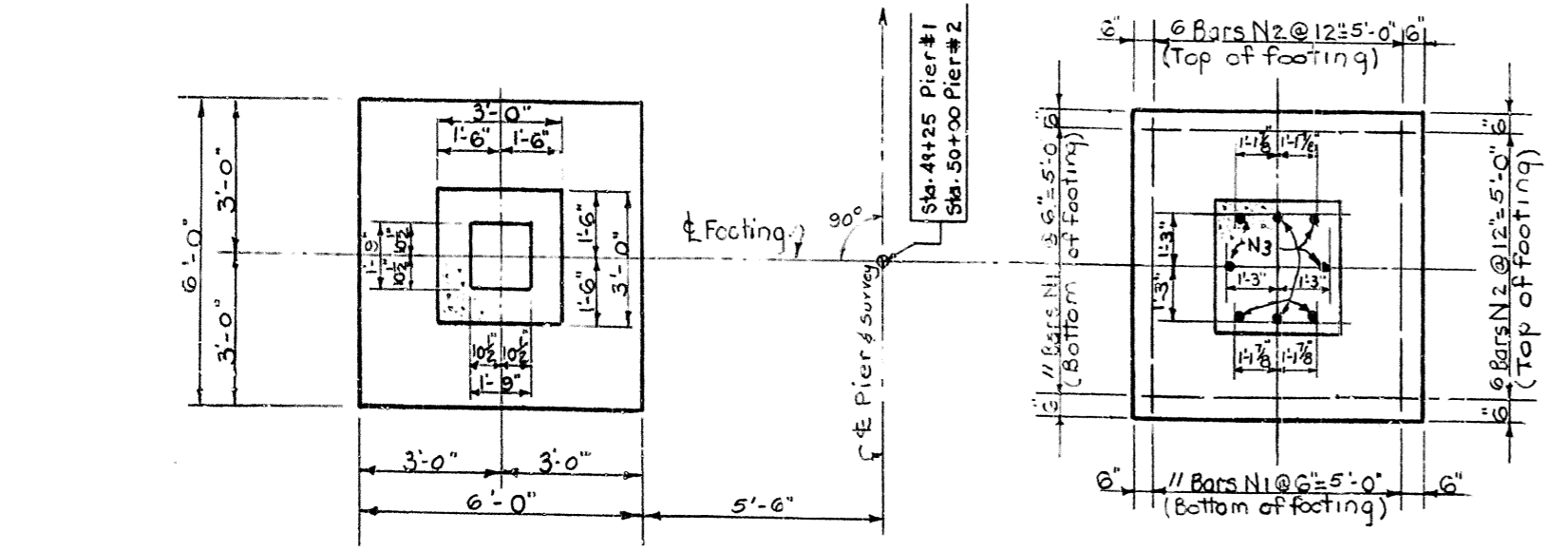
FED. ROAD DIST.	STATE	FED. AID PROJ. NO.	FED. PROJ. TITLE	SHEET NO.	TOTAL SHEETS
7	KY.				



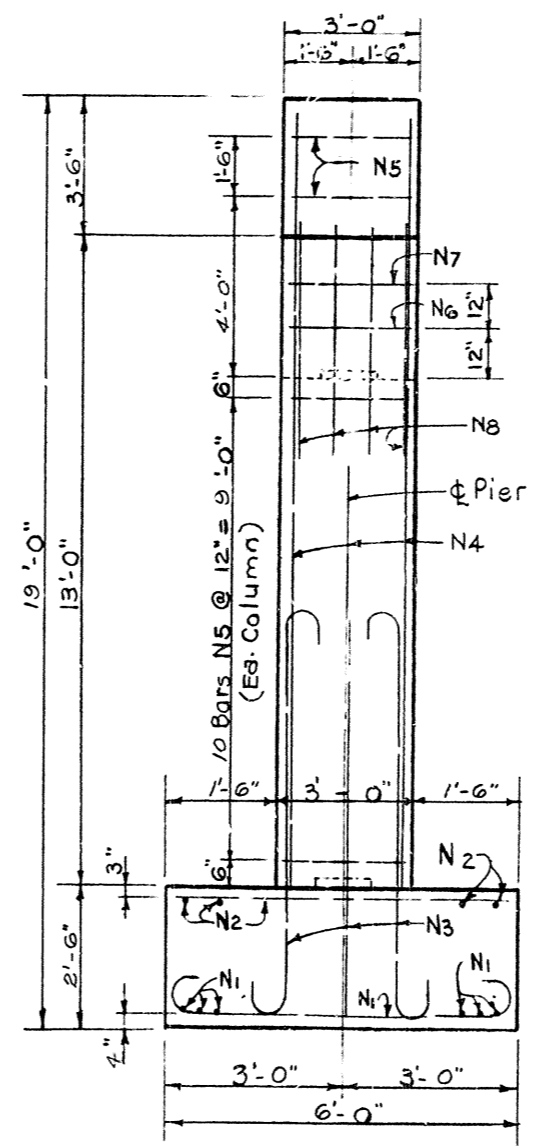
PLAN OF CAP



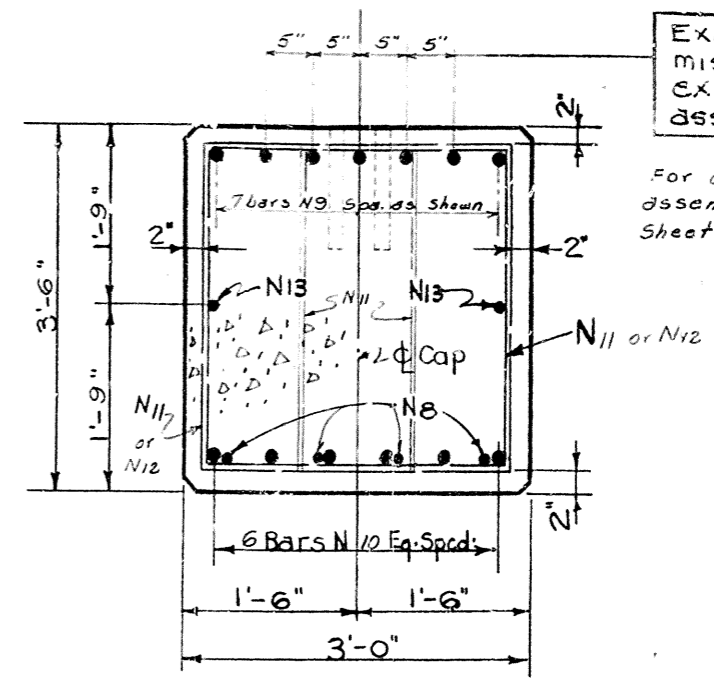
FRONT ELEVATION



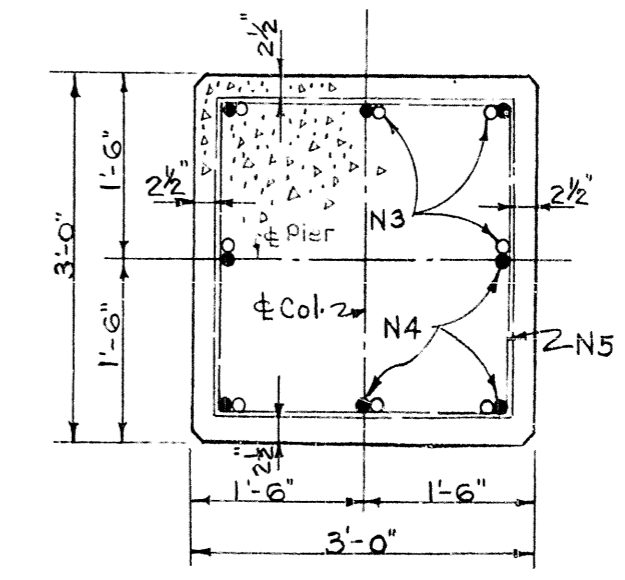
PLAN OF FOOTING



END ELEVATION



SECTION A-A



SECTION B-B

Exactly located so as to miss drilled holes for expansion rocker assembly C1.
For details of expansion rocker assemblies, see Anchor Bolt Plan Sheet 10 of Std. Drwg. # SSI.

ESTIMATE OF QUANTITIES

PIER NO. 1	
CONCRETE CLASS A	27.5 CU.YDS.
REINFORCEMENT	4909 LBS.
PIER NO. 2	
CONCRETE CLASS "A"	27.5 CU.YDS.
REINFORCEMENT	4909 LBS.

NOTE: FOR BILL OF REINFORCEMENT SEE SHEET NO. 7

DRAWN BY: C.G. C.O. & C. CHECKED BY: J.P. H. DATE: 12/22/55
 REVISION: 1. DATE: 12/22/55
 CHECKED BY: J.P. H. DATE: 12/22/55
 CHECKED BY: J.P. H. DATE: 12/22/55

PIERS NO. 1 & NO. 2

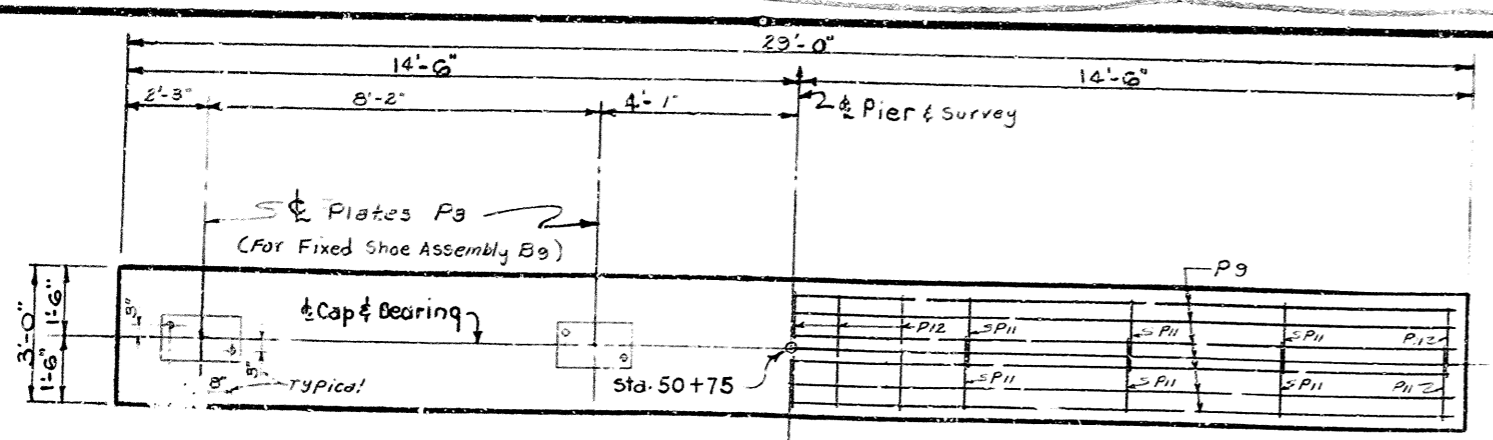
70.9 TAYLORSVILLE ROAD OVER INTERSTATE SHEET 4

COMMONWEALTH OF KENTUCKY
 DEPARTMENT OF HIGHWAYS
 FRANKFORT
 COUNTY OF
SHELBY
 LOUISVILLE - LEXINGTON - CATLETTSBURG

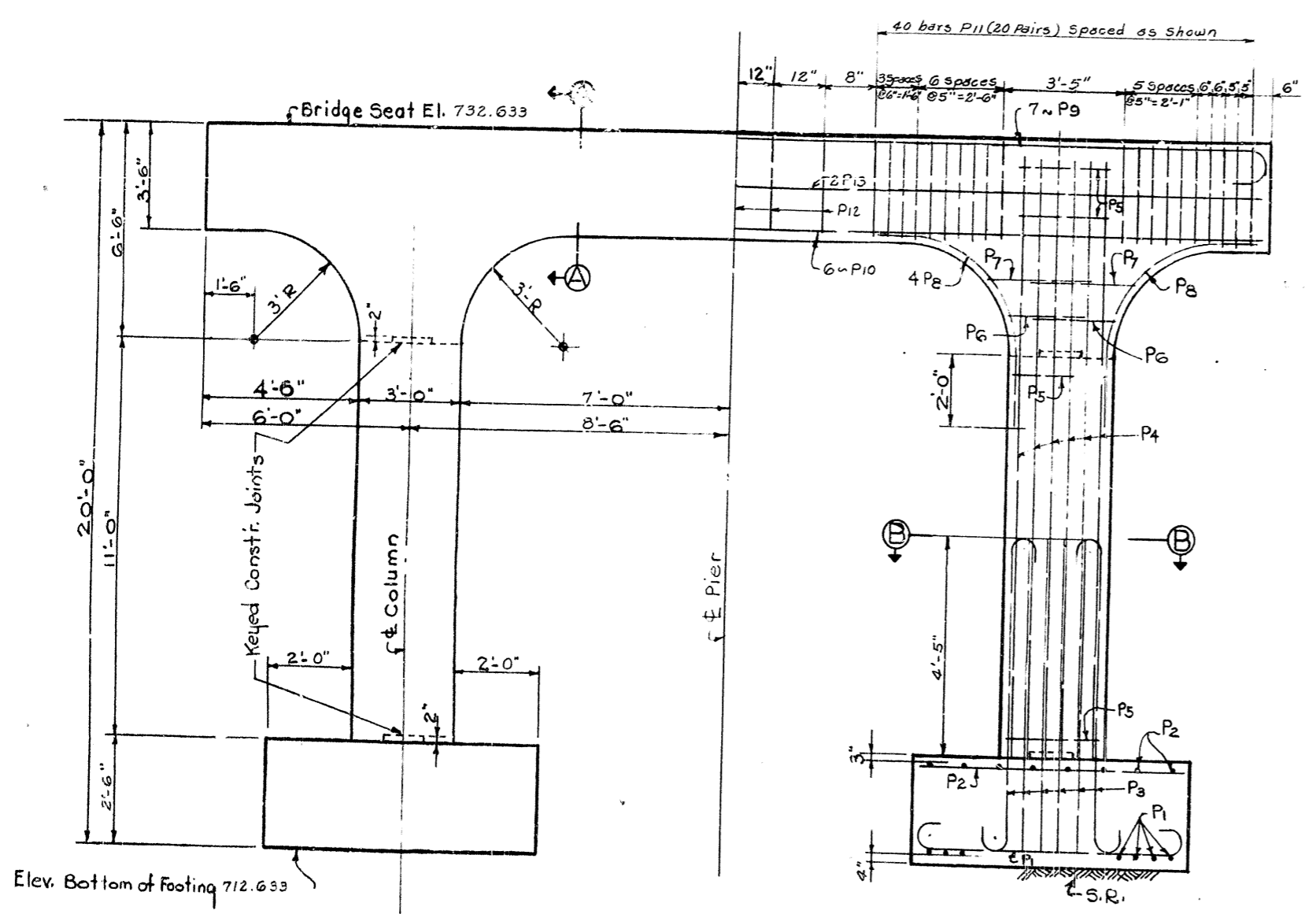
50 + 00 = ROAD
 STATION 1321 + 79 1/4 INTERSTATE PROJECT NO.

BRIDGE NUMBER	DRAWING NO. 13755	INDEX
---------------	-------------------	-------

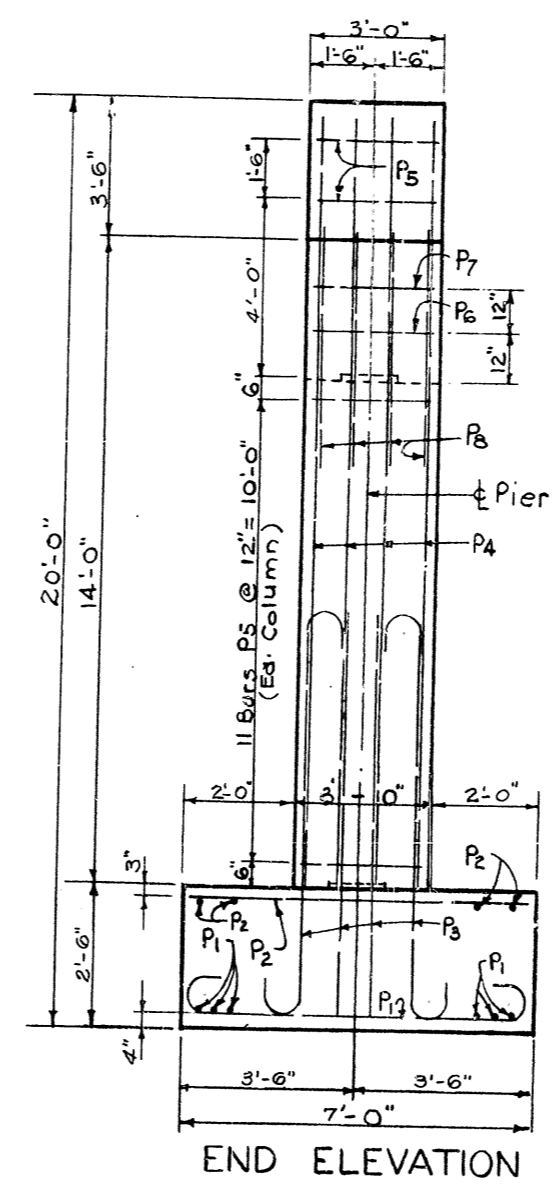
NO.	DATE	BY	CHKD.	APP.
7	KY.			



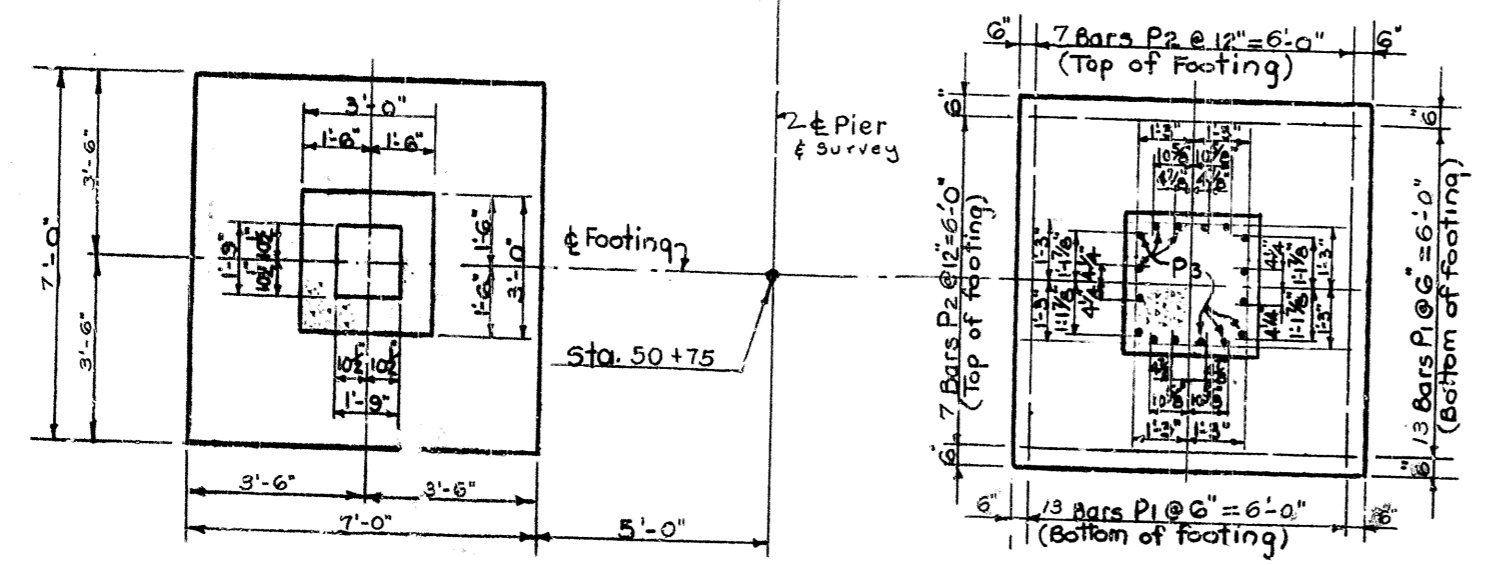
PLAN OF CAP



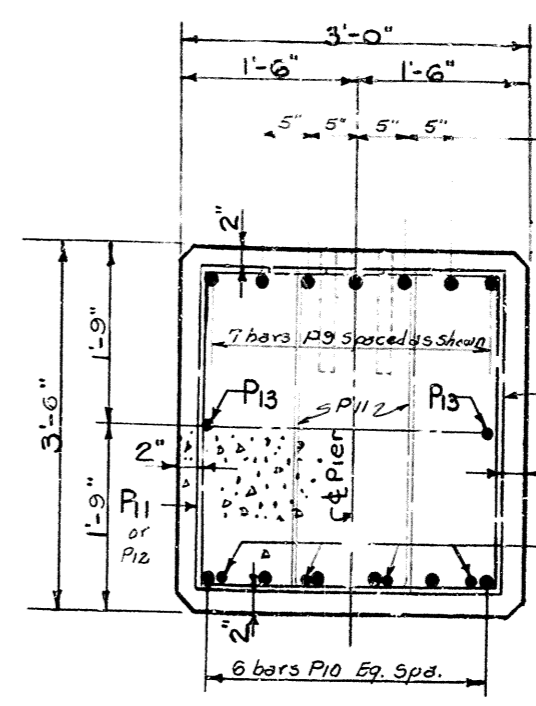
FRONT ELEVATION



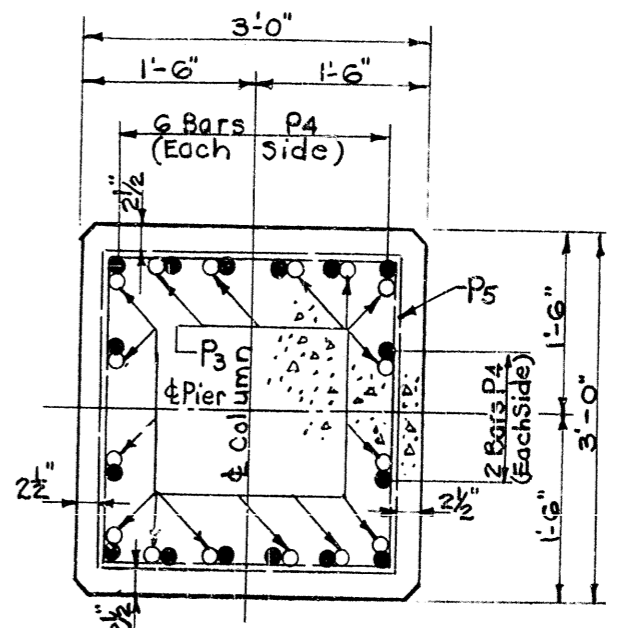
END ELEVATION



PLAN OF FOOTING



SECTION A-A



SECTION B-B

ESTIMATE OF QUANTITIES

CLASS "A" CONCRETE	30.5	CUYDS
REINFORCEMENT	6110	LBS.

NOTE: FOR BILL OF REINFORCEMENT SEE SHEET NO. 7

DRAWN BY: P.G. COPELAND
 CHECKED BY: J. W. HARRIS
 DATE: 9/27/58
 PROJECT NO. 3755

PIER NO. 3

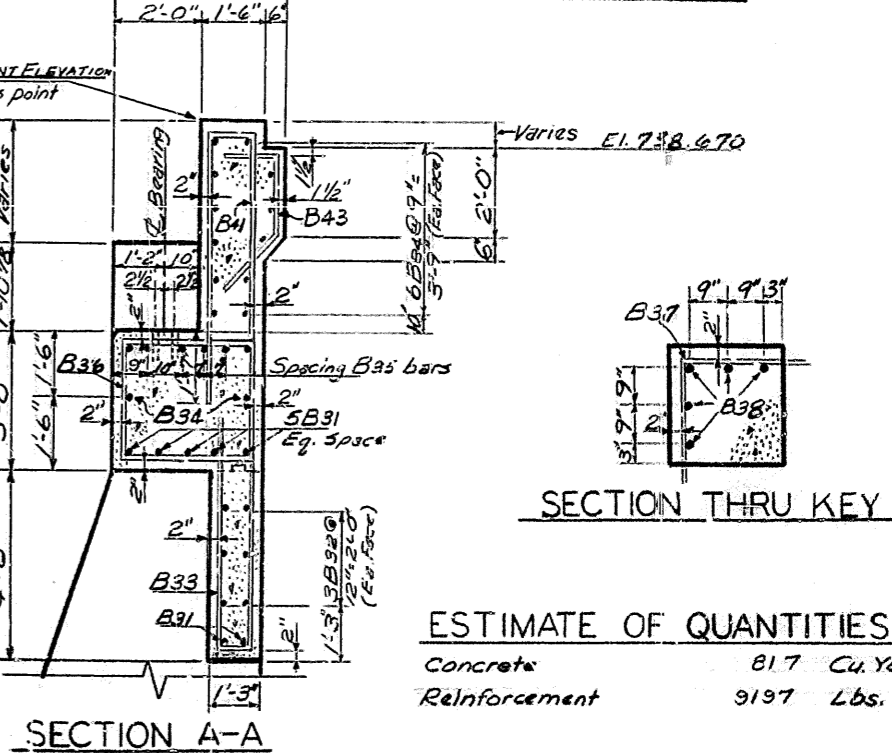
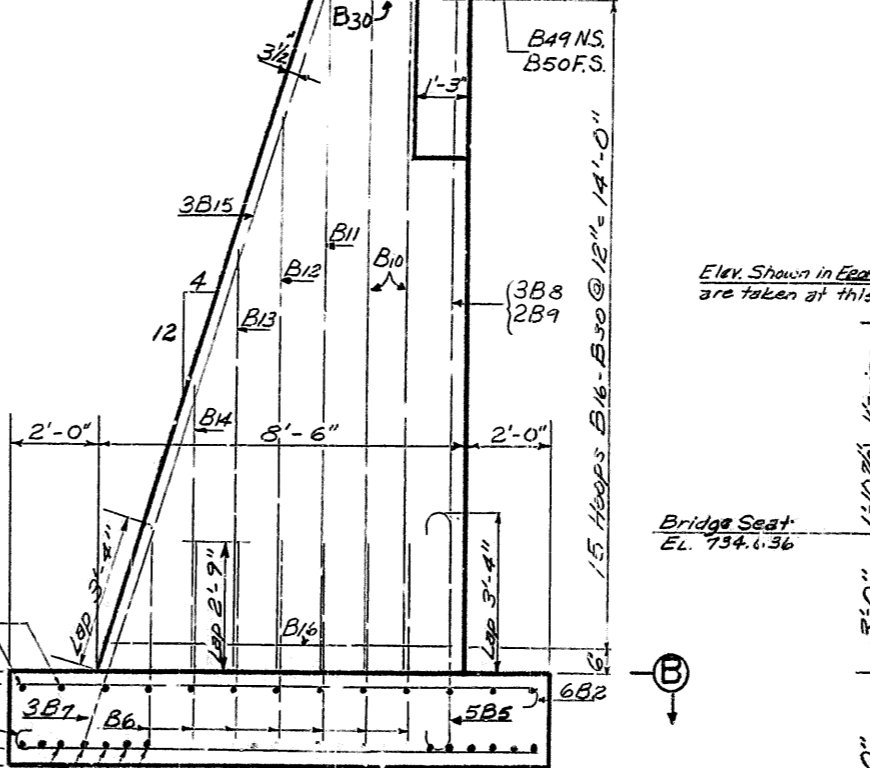
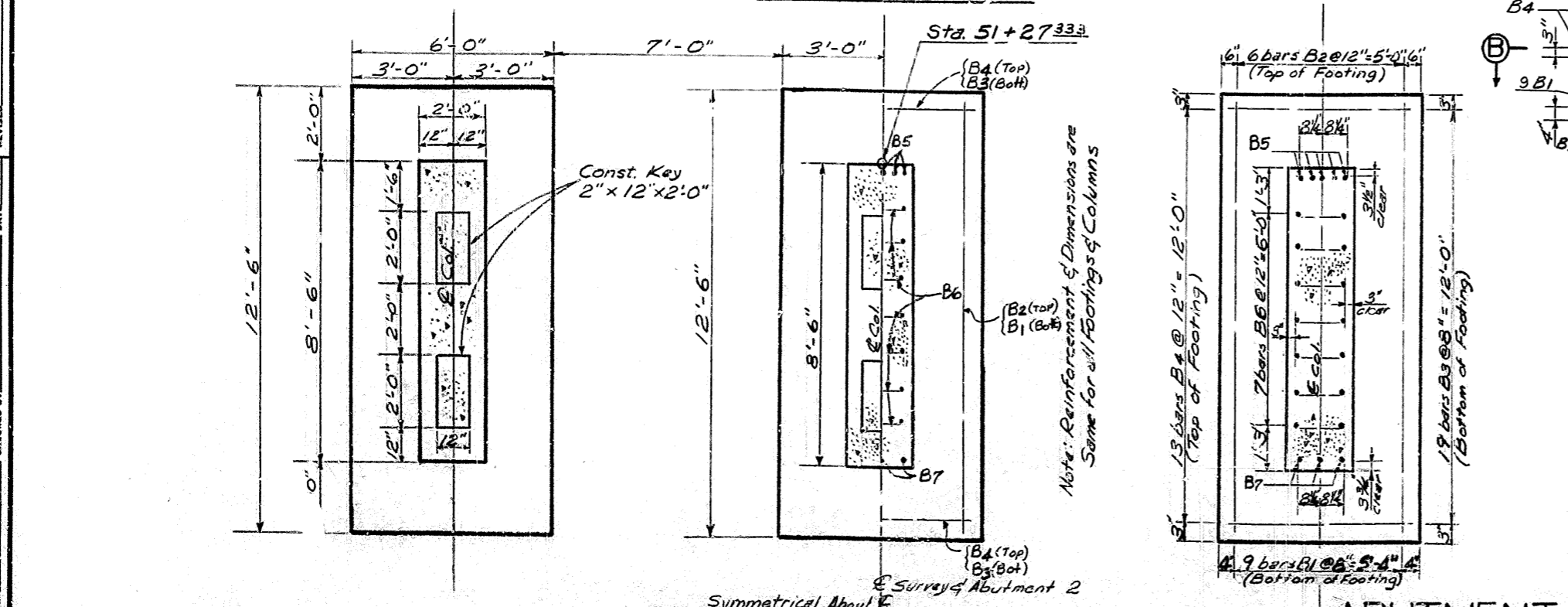
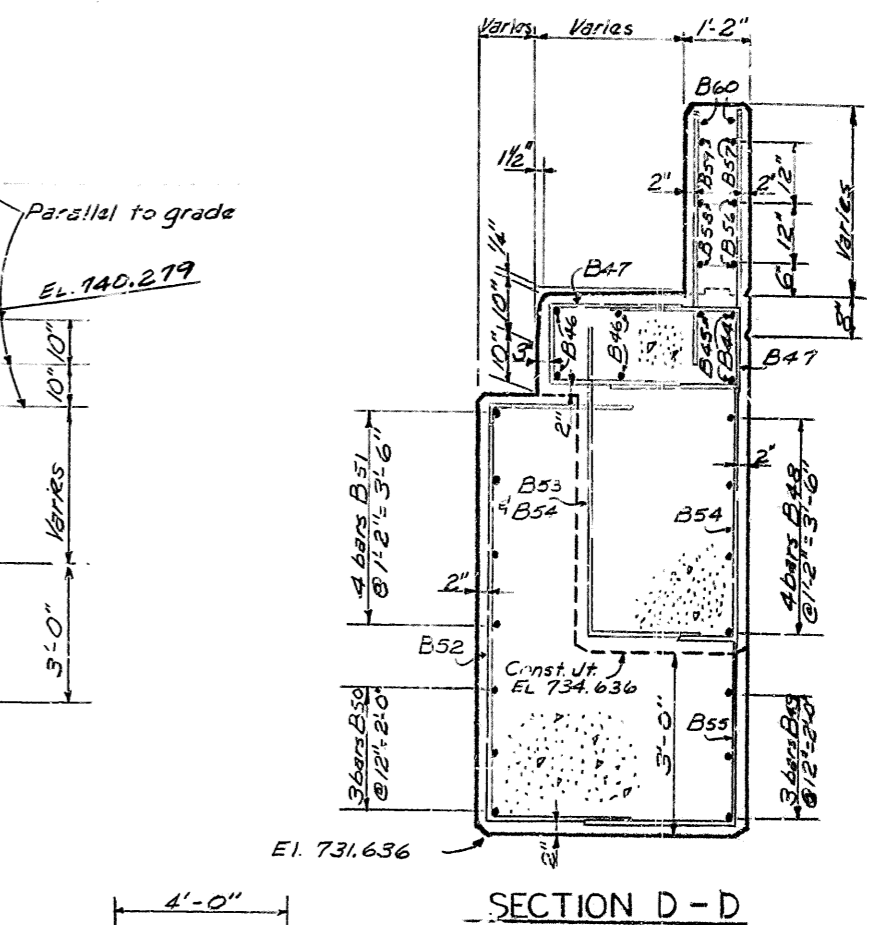
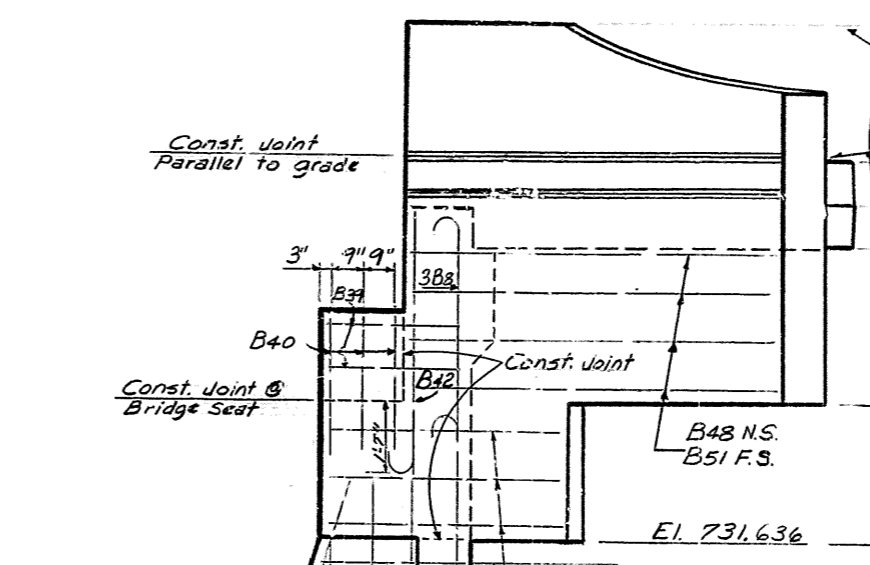
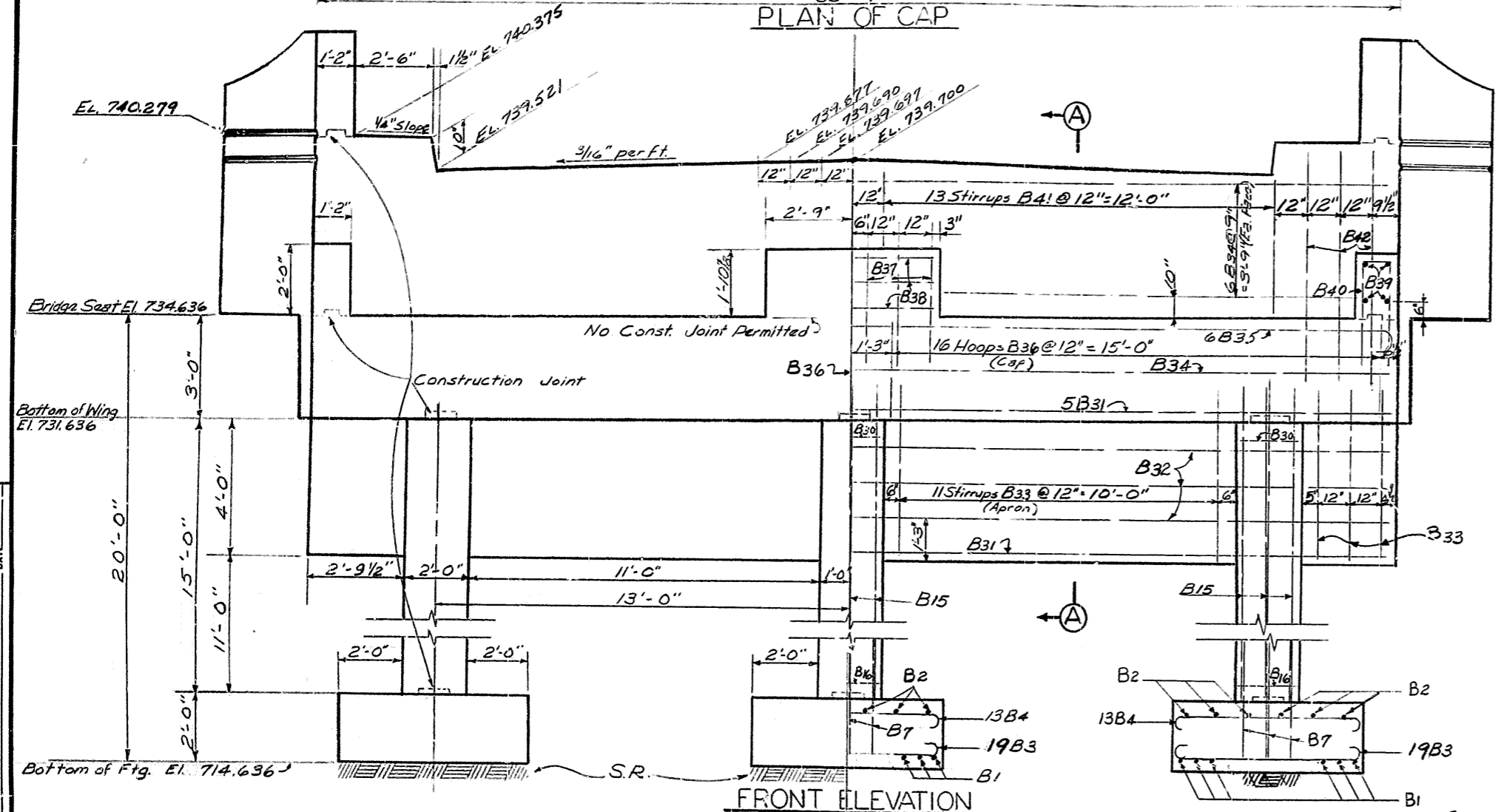
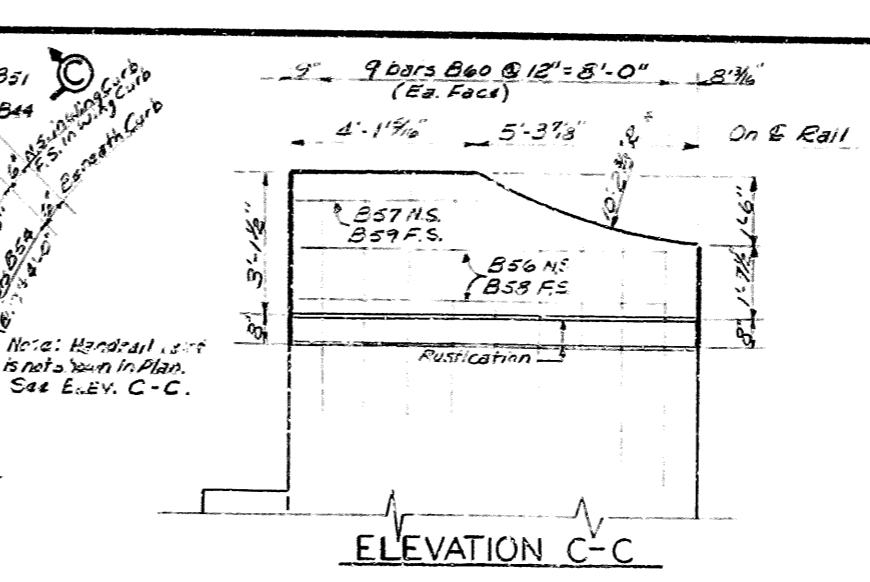
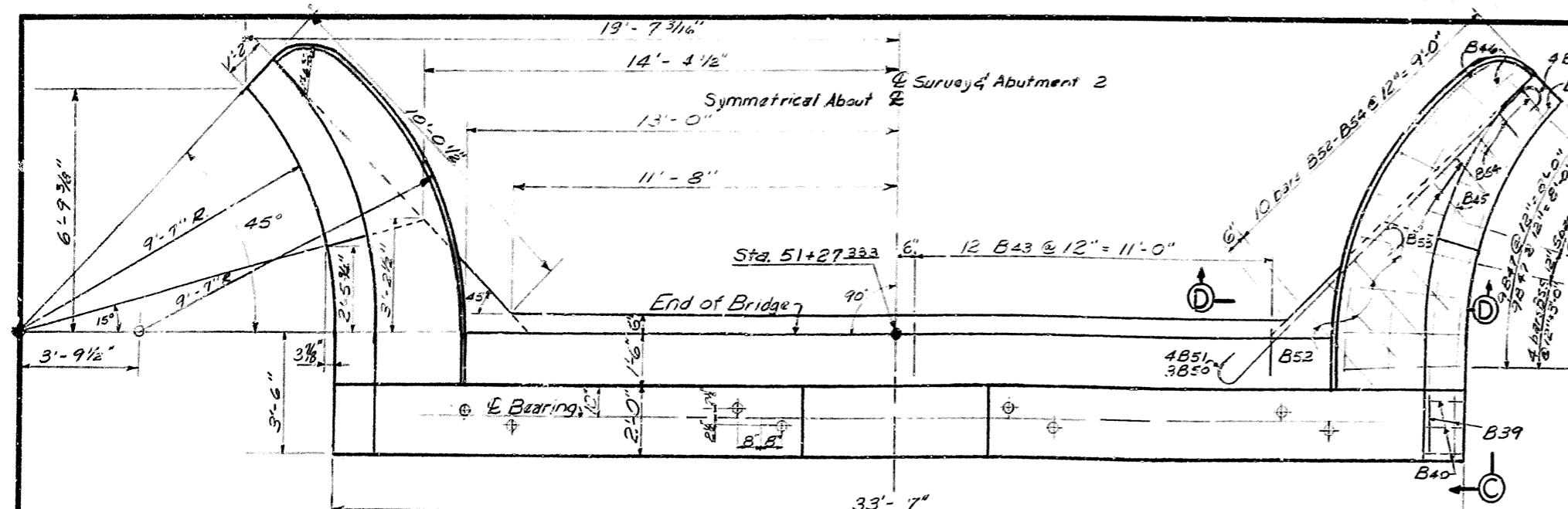
OLD TAYLORSVILLE ROAD OVER INTERSTATE SHEET 5

COMMONWEALTH OF KENTUCKY
 DEPARTMENT OF HIGHWAYS
 FRANKFORT
 COUNTY OF
SHELBY
 LOUISVILLE-LEXINGTON-CATLETTSBURG

50 + 0 = ROAD
 STATION 1521 + 792 INTERSTATE PROJECT NO.

BRIDGE NUMBER 13755 DRAWING NO. 13755

FED. ROAD DIST.	STATE	FED. AID PROJ. NO.	FISCAL YEAR	DRAWING NO.	TOTAL SHEETS
7	KY.				



ESTIMATE OF QUANTITIES

Concrete	817 Cu. Yds.
Reinforcement	9197 Lbs.

DESIGNED BY: M. J. L. S. CHECKED BY: C. G. COOK
 DETAILED BY: M. J. L. S. CHECKED BY: C. G. COOK
 DATE: DATE
 REVISION: REVISION
 DATE: DATE

ABUTMENT NO. 2

SECTION B-B

Old Taylorsville Rd. Over Interstate Sheet 6

COMMONWEALTH OF KENTUCKY
 DEPARTMENT OF HIGHWAYS
 FRANKFORT
 COUNTY OF
SHELBY
 LOUISVILLE - LEXINGTON -
 CATLETTSBURG

50+00 Old Taylorsville Road
 STATION 1321+74.17 Interstate PROJECT NO.

BRIDGE NUMBER	DRAWING NO.	INDEX
	13755	

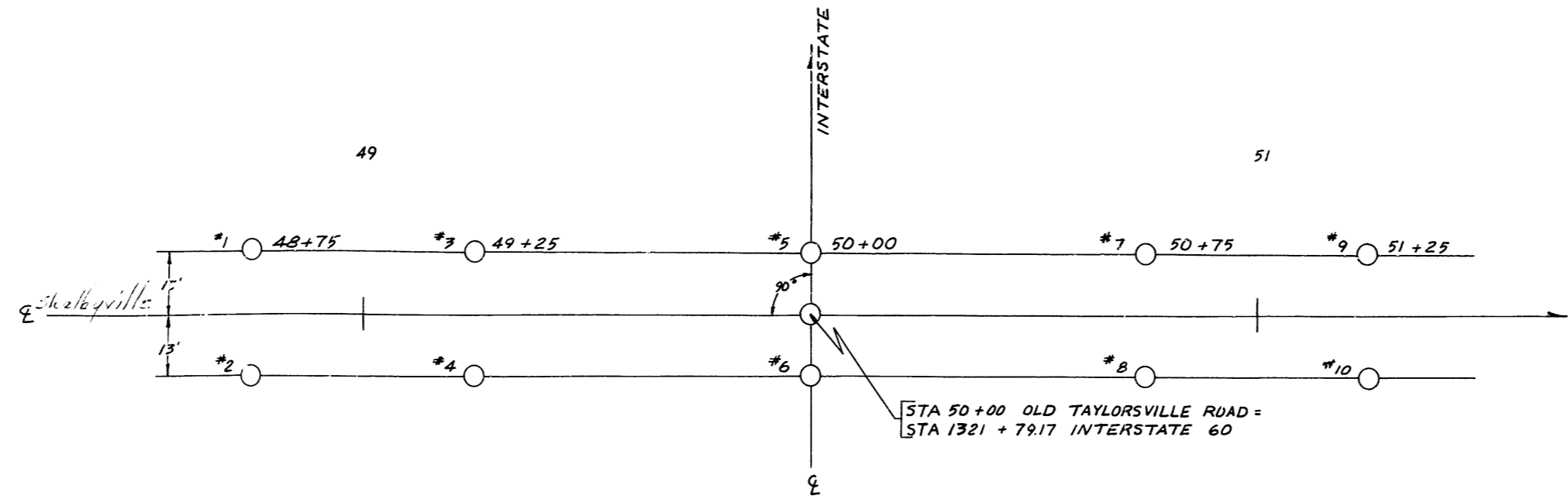
BILL OF REINFORCEMENT

MARK	TYPE	NO.	SIZE	LENGTH	LOCATION	a	b	c	d	e	f	g	h	j
A1	Str	45	#5	9'10"	ABUTMENT 1									
A2	Str	87	#5	9'10"	FOOTINGS-TOP AND BOTTOM	9'0"	0'10"	0'5"						
A3	Str	15	#6	6'8"	DOWELS-BACK FACE	4'6"	1'0"	0'6"	5'0"					
A4	Str	15	#5	10'2"	SIDES	1'6"	4'5"	4'5"						
A5	Str	9	#6	4'11"	FRONT FACE									
A6	Str	9	#6	16'3"	COLUMNS-BACK FACE	15'5"	0'10"	0'6"						
A7	Str	12	#5	9'8"	SIDES									
A8	Str	6	#5	7'8"										
A9	Str	6	#5	5'0"										
A10	Str	9	#6	10'2"	FRONT FACE									
A11	Str	20	#4	15'7"	HOOPS	5'9"	1'7"	0'6"						
A12	Str	3	#5	18'9"		5'5"	1'7"	0'6"						
A13	Str	3	#5	18'0"		5'0"	1'7"	0'6"						
A14	Str	3	#5	13'3"		4'8"	1'7"	0'6"						
A15	Str	3	#5	12'6"		4'3"	1'7"	0'6"						
A16	Str	3	#5	11'9"		3'11"	1'7"	0'6"						
A17	Str	3	#5	11'0"		3'6"	1'7"	0'5"						
A18	Str	3	#5	10'3"		3'2"	1'7"	0'6"						
A19	Str	2	#7	33'3"	APRON									
A20	Str	4	#5	33'3"										
A21	Str	34	#8	9'1"	STIRRUPS	0'11"	4'2"	4'2"						
A22	Str	5	#7	33'3"	CAP-BOTTOM									
A23	Str	2	#6	33'3"	SIDES									
A24	Str	1	#9	35'8"	TOP	32'4"	1'8"	0'11"	33'3"					
A25	Str	24	#5	12'5"	HOOPS	3'2"	2'8"	0'6"						
A26	Str	8	#5	5'1"	KEY	3'7"	3'2"							
A27	Str	5	#4	5'2"	KEY									
A28	Str	8	#5	3'0"	END WALLS									
A29	Str	34	#6	6'8"		0'	3'0"	3'0"						
A30	Str	12	#6	33'3"	PARAPET									
A31	Str	34	#7	13'8"	STIRRUPS	1'2"	6'4"	6'4"						
A32	Str	13	#6	7'11"	HOOKS	6'11"	1'0"	0'6"						
A33	Str	24	#5	5'6"	LEDGE	1'9"	1'8"	1'6"	1'6"	2'2"				
A34	Str	10	#8	8'11"	WING CURBS	1'4"	7'7"	9'9"						
A35	Str	2	#5	9'5"		1'4"	8'1"	10'5"						
A36	Str	8	#5	10'1"		1'4"	8'9"	9'2"						
A37	Str	34	#5	5'0"		1'4"	1'11"	1'11"						
A38	Str	10	#8	8'11"		1'4"	7'7"	9'9"						
A39	Str	6	#5	3'9"		1'4"	2'5"	9'9"						
A40	Str	5	#8	8'5"	WING HAUNCHES	5'5"	1'6"	0'10"						
A41	Str	8	#5	14'6"		11'6"	1'6"	0'10"						
A42	Str	34	#5	12'7"		6'9"	3'0"	3'0"						
A43	Str	6	#5	6'8"		5'3"	1'8"							
A44	Str	6	#5	6'11"		5'3"	0'11"							
A45	Str	10	#5	6'11"		5'3"	0'11"							
A46	Str	8	#5	10'8"		8'3"	2'6"							
A47	Str	10	#4	8'11"	WING RAIL-HORIZONTAL	1'4"	7'7"	9'9"						
A48	Str	2	#5	3'11"		1'4"	2'7"	9'9"						
A49	Str	4	#5	5'5"		1'4"	8'1"	10'5"						
A50	Str	2	#5	4'11"		1'4"	2'9"	10'5"						
A51	Str	36	#6	4'7"	VERTICAL	1'4"	2'9"	10'5"						

MARK	TYPE	NO.	SIZE	LENGTH	LOCATION	a	b	c	d	e	f	g	h	j
N1	Str	44	#5	6'11"	PIER 1									
N2	Str	24	#5	5'8"	BOTTOM OF FOOTING	5'3"	0'10"	0'5"	5'6"					
N3	Str	16	#9	9'6"	TOP OF FOOTING									
N4	Str	16	#9	9'6"	COLUMN DOWELS	6'2"	1'8"	0'11"						
N5	Str	24	#4	11'1"	COLUMNS-VERTICAL									
N6	Str	4	#4	6'11"	COLUMN HOOPS	2'7"	2'7"	0'6"						
N7	Str	4	#4	7'11"	HAUNCH TIES	2'7"	2'9"	2'9"						
N8	Str	50	#5	8'5"	BARS	3'3"	2'0"	5'1"	1'4"					
N9	Str	7	#11	31'6"	TOP OF CAP	27'6"	2'0"	1'13"	28'7"					
N10	Str	6	#9	28'8"	BOTTOM OF CAP									
N11	Str	24	#5	10'10"	CAP HOOPS	1'10"	3'2"	0'6"						
N12	Str	5	#5	12'5"		2'8"	3'2"	0'6"						
N13	Str	2	#5	28'8"	SIDES OF CAP									
P1	Str	52	#6	8'2"	PIER 2									
P2	Str	28	#5	6'8"	BOTTOM OF FOOTING	6'2"	1'0"	0'6"	6'8"					
P3	Str	32	#8	8'9"	TOP OF FOOTING									
P4	Str	32	#8	8'9"	COLUMN DOWELS	5'9"	1'6"	0'10"						
P5	Str	24	#4	11'1"	COLUMNS-VERTICAL									
P6	Str	4	#4	6'11"	COLUMN HOOPS	2'7"	2'7"	0'6"						
P7	Str	4	#4	7'11"	HAUNCH TIES	2'7"	2'9"	2'9"						
P8	Str	50	#5	8'5"	BARS	3'3"	2'0"	5'1"	1'4"					
P9	Str	7	#11	31'6"	TOP OF CAP	27'6"	2'0"	1'13"	28'7"					
P10	Str	6	#9	28'8"	BOTTOM OF CAP									
P11	Str	24	#5	10'10"	CAP HOOPS	1'10"	3'2"	0'6"						
P12	Str	5	#5	12'5"		2'8"	3'2"	0'6"						
P13	Str	2	#5	28'8"	SIDES OF CAP									
B1	Str	13	#6	13'0"	ABUTMENT 2									
B2	Str	18	#5	12'10"	FOOTINGS-BOTTOM	12'0"	1'0"	0'6"						
B3	Str	57	#6	7'3"	FOOTINGS-TOP	12'0"	0'10"	0'5"						
B4	Str	39	#5	7'0"	FOOTINGS-BOTTOM	5'3"	1'0"	0'6"	5'9"					
B5	Str	15	#6	6'6"	FOOTINGS-TOP	5'4"	0'10"	0'5"	5'9"					
B6	Str	21	#5	10'2"	DOWELS-BACK FACE	4'6"	1'0"	0'6"	5'0"					
B7	Str	9	#6	4'11"	DOWELS-SIDES	1'6"	4'5"	4'5"						
B8	Str	13	#5	23'5"	DOWELS-FRONT FACE	22'5"	1'0"	0'6"						
B9	Str	6	#5	18'5"	COLUMNS-BACK FACE	17'5"	1'0"	0'6"						
B10	Str	12	#5	16'4"	COLUMNS-SIDES									
B11	Str	6	#5	14'8"										
B12	Str	6	#5	11'8"										

MARK	TYPE	NO.	SIZE	LENGTH	LOCATION	a	b	c	d	e	f	g	h	j
B13	Str	6	#5	8'8"	ABUTMENT 2 (CONTINUED)									
B14	Str	6	#5	5'8"	COLUMNS-SIDES									
B15	Str	9	#6	17'5"	COLUMNS-FRONT FACE									
B16	Str	24	#4	19'7"	COLUMN-HOOPS	7'10"	1'7"	0'6"						
B17	Str	3	#5	18'11"		7'6"	1'7"	0'6"						
B18	Str	3	#5	18'3"		7'2"	1'7"	0'6"						
B19	Str	3	#5	17'7"		6'10"	1'7"	0'6"						
B20	Str	3	#5	16'11"		6'6"	1'7"	0'6"						
B21	Str	3	#5	16'3"		6'2"	1'7"	0'6"						
B22	Str	3	#5	15'7"		5'10"	1'7"	0'6"						
B23	Str	3	#5	14'11"		5'6"	1'7"	0'6"						
B24	Str	3	#5	14'3"		5'2"	1'7"	0'6"						
B25	Str	3	#5	13'7"		4'10"	1'7"	0'6"						
B26	Str	3	#5	12'11"		4'6"	1'7"	0'6"						
B27	Str	3	#5	12'3"		4'2"	1'7"	0'6"						
B28	Str	3	#5	11'7"		3'10"	1'7"	0'6"						
B29	Str	3	#5	10'11"		3'6"	1'7"	0'6"						
B30	Str	3	#5	10'3"		3'2"	1'7"	0'6"						
B31	Str	7	#7	33'3"	APRON AND BOTTOM CAP									
B32	Str	6	#5	33'3"										
B33	Str	34	#8	9'1"	APRON-STIRRUPS	0'11"								

SOUNDING LAYOUT

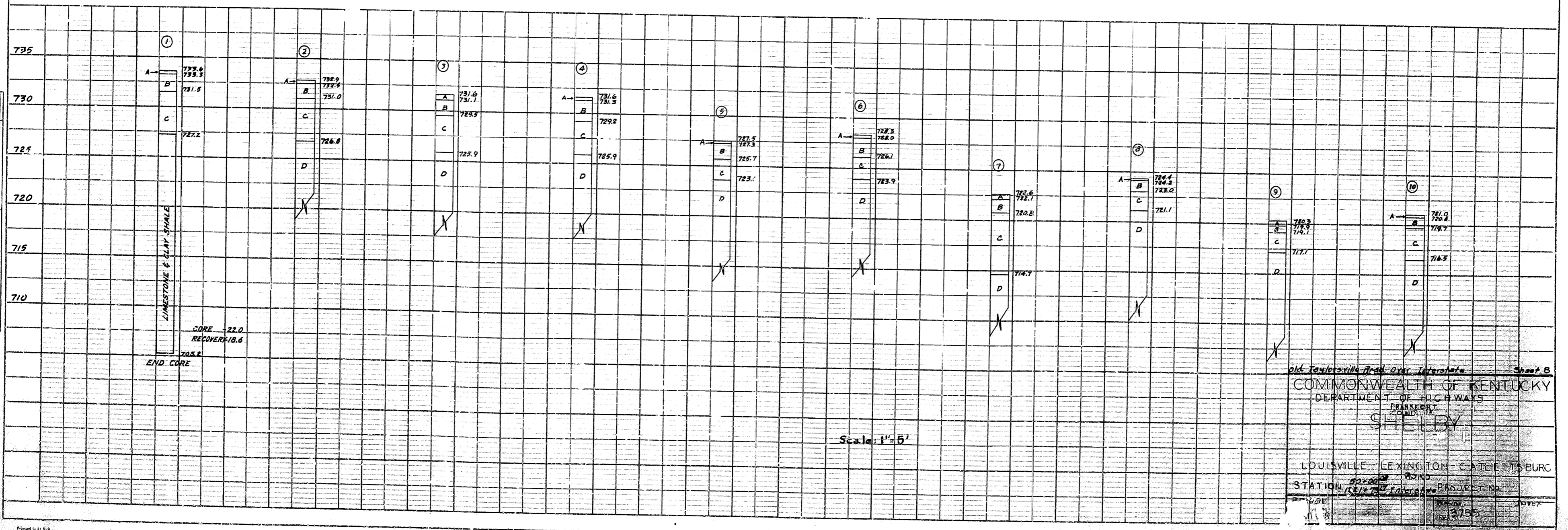


SHELBY COUNTY
 U.S. 60 INTERSTATE SP 106-806-L2
 OLD TAYLORSVILLE RD. BRIDGE
 SCALE: 1" = 20'

A - TOP SOIL
 B - YELLOW SANDY CLAY
 C - YELLOW CLAY
 D - LIMESTONE

PLAN	DATE
SURVEYED	BY
ADJUSTED	DATE
FIELD CHECKED	BY
OFFICE CHECKED	DATE
NO.	

PROFILE	DATE
SURVEYED	BY
PLOTTED	DATE
FIELD CHECKED	BY
OFFICE CHECKED	DATE
NO.	



Scale: 1" = 5'

COMMONWEALTH OF KENTUCKY
 DEPARTMENT OF HIGHWAYS
 FRANKFORT
 SHELBY

LOUISVILLE - LEXINGTON - CATLETTSBURG
 ROAD
 STATION 1321 + 79.17
 PROJECT NO. 3755

Made in U.S.A.
 Co. 047021 Insp. Co.

PLATE 1 PLAN-PROFILE P R STANDARD
 FORM 1000-10-60 (REVISED 1960)

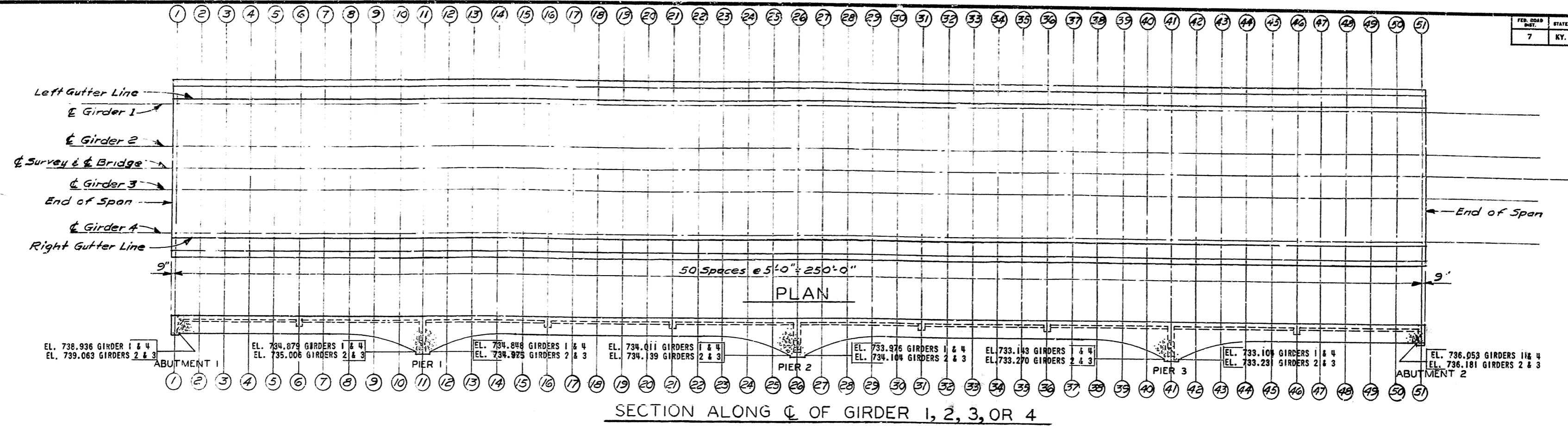
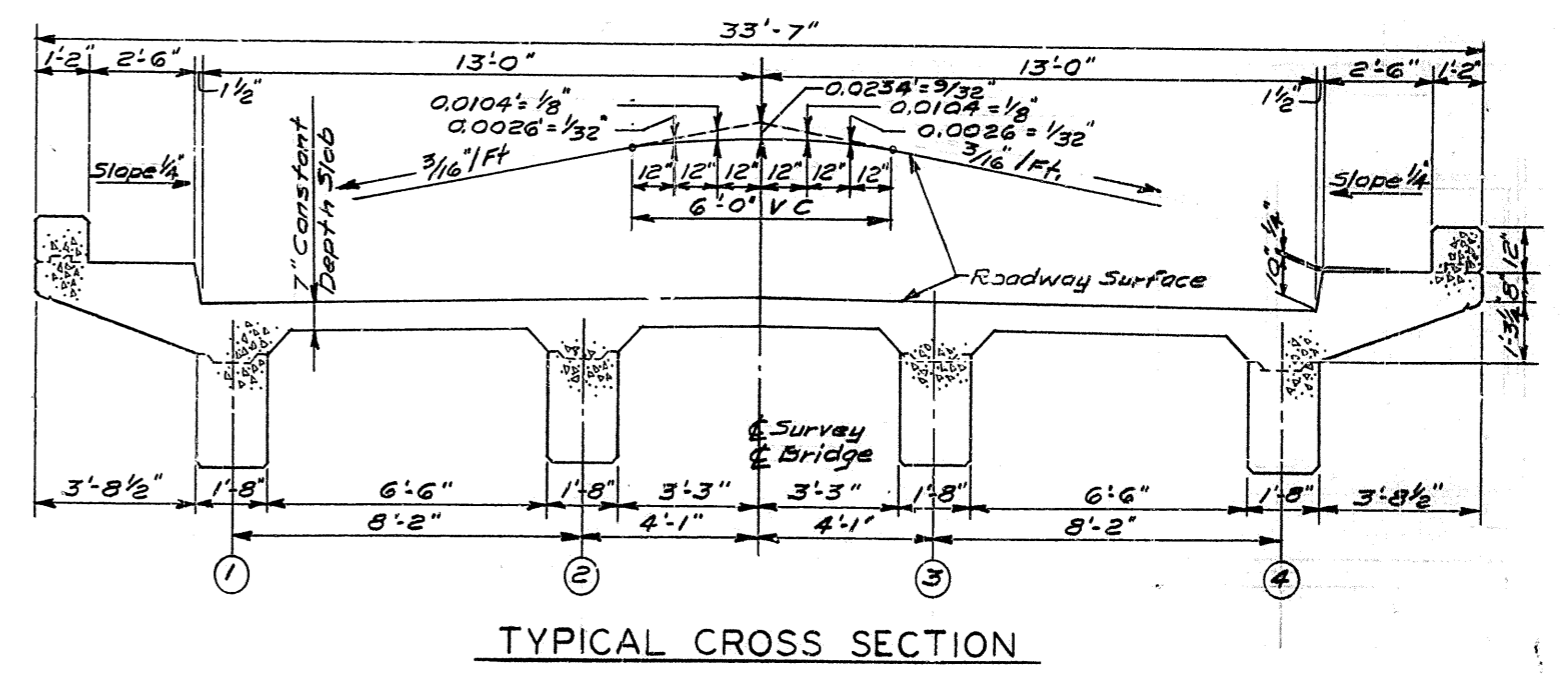


TABLE OF ELEVATIONS

SECTION	STATION	LEFT & RIGHT GUTTER LINES	GIRDERS 1 & 4		GIRDERS 2 & 3		C SURVEY
			BOTTOM	TOP	BOTTOM	TOP	
END OF SPAN	48+78.25	742.439	-----	742.478	-----	742.619	
1	48+75.00	742.431	738.692	740.70	738.692	742.610	
2	48+80.00	742.389	738.900	741.528	739.028	742.568	
3	48+85.00	742.343	738.854	742.482	738.982	742.522	
4	48+90.00	742.291	738.802	742.430	738.930	742.470	
5	48+95.00	742.232	738.743	742.371	738.871	742.411	
6	48+00.00	742.167	738.678	742.306	738.806	742.386	
7	48+05.00	742.099	738.610	742.238	738.738	742.278	
8	48+10.00	742.080	738.376	742.169	738.503	742.209	
9	48+15.00	741.965	737.576	742.104	737.703	742.144	
10	48+20.00	741.906	736.194	742.045	736.321	742.085	
11	48+25.00	741.851	734.612	741.990	734.612	742.030	
12	48+30.00	741.803	736.091	741.942	736.218	741.982	
13	48+35.00	741.759	737.370	741.898	737.497	741.938	
14	48+40.00	741.740	738.066	741.859	738.193	741.899	
15	48+45.00	741.685	738.157	741.824	738.324	741.864	
16	48+50.00	741.649	738.161	741.788	738.288	741.828	
17	48+55.00	741.607	738.118	741.746	738.246	741.786	
18	48+60.00	741.555	738.067	741.694	738.194	741.734	
19	48+65.00	741.495	738.007	741.634	738.134	741.675	
20	48+70.00	741.426	737.937	741.565	738.065	741.605	
21	48+75.00	741.347	737.859	741.486	737.986	741.526	
22	48+80.00	741.265	737.776	741.404	737.904	741.444	
23	48+85.00	741.185	737.531	741.324	737.658	741.364	
24	48+90.00	741.109	736.721	741.239	736.848	741.289	
25	48+95.00	741.093	735.331	741.182	735.459	741.223	
26	50+00.00	740.981	733.742	741.120	733.742	741.160	
27	50+05.00	740.927	735.215	741.058	735.343	741.107	
28	50+10.00	740.877	736.489	741.017	736.616	741.057	
29	50+15.00	740.837	737.183	740.976	737.310	741.016	
30	50+20.00	740.801	737.312	740.940	737.440	740.980	
31	50+25.00	740.767	737.279	740.906	737.406	740.946	
32	50+30.00	740.730	737.241	740.869	737.369	740.909	
33	50+35.00	740.683	737.195	740.822	737.322	740.863	
34	50+40.00	740.627	737.139	740.756	737.266	740.806	
35	50+45.00	740.563	737.074	740.702	737.202	740.742	
36	50+50.00	740.489	737.001	740.628	737.128	740.668	
37	50+55.00	740.409	736.921	740.548	737.048	740.588	
38	50+60.00	740.328	736.674	740.457	736.801	740.507	
39	50+65.00	740.251	735.862	740.390	735.989	740.430	
40	50+70.00	740.179	734.467	740.318	734.594	740.352	
41	50+75.00	740.111	732.872	740.250	732.872	740.290	
42	50+80.00	740.050	734.338	740.189	734.465	740.229	
43	50+85.00	739.993	735.604	740.132	735.731	740.172	
44	50+90.00	739.942	736.288	740.081	736.415	740.121	
45	50+95.00	739.895	736.408	740.034	736.534	740.074	
46	51+00.00	739.847	736.358	739.986	736.486	740.026	
47	51+05.00	739.798	736.307	739.935	736.435	739.975	
48	51+10.00	739.739	736.250	739.878	736.378	739.918	
49	51+15.00	739.675	736.186	739.814	736.314	739.854	
50	51+20.00	739.605	736.116	739.744	736.244	739.784	
51	51+25.00	739.531	735.792	739.670	735.792	739.710	
END OF SPAN	51+25.75	739.522	-----	739.661	-----	739.701	

Note: Elevations shown on this sheet include construction camber and shall be maintained with falsework in place.



ELEVATIONS

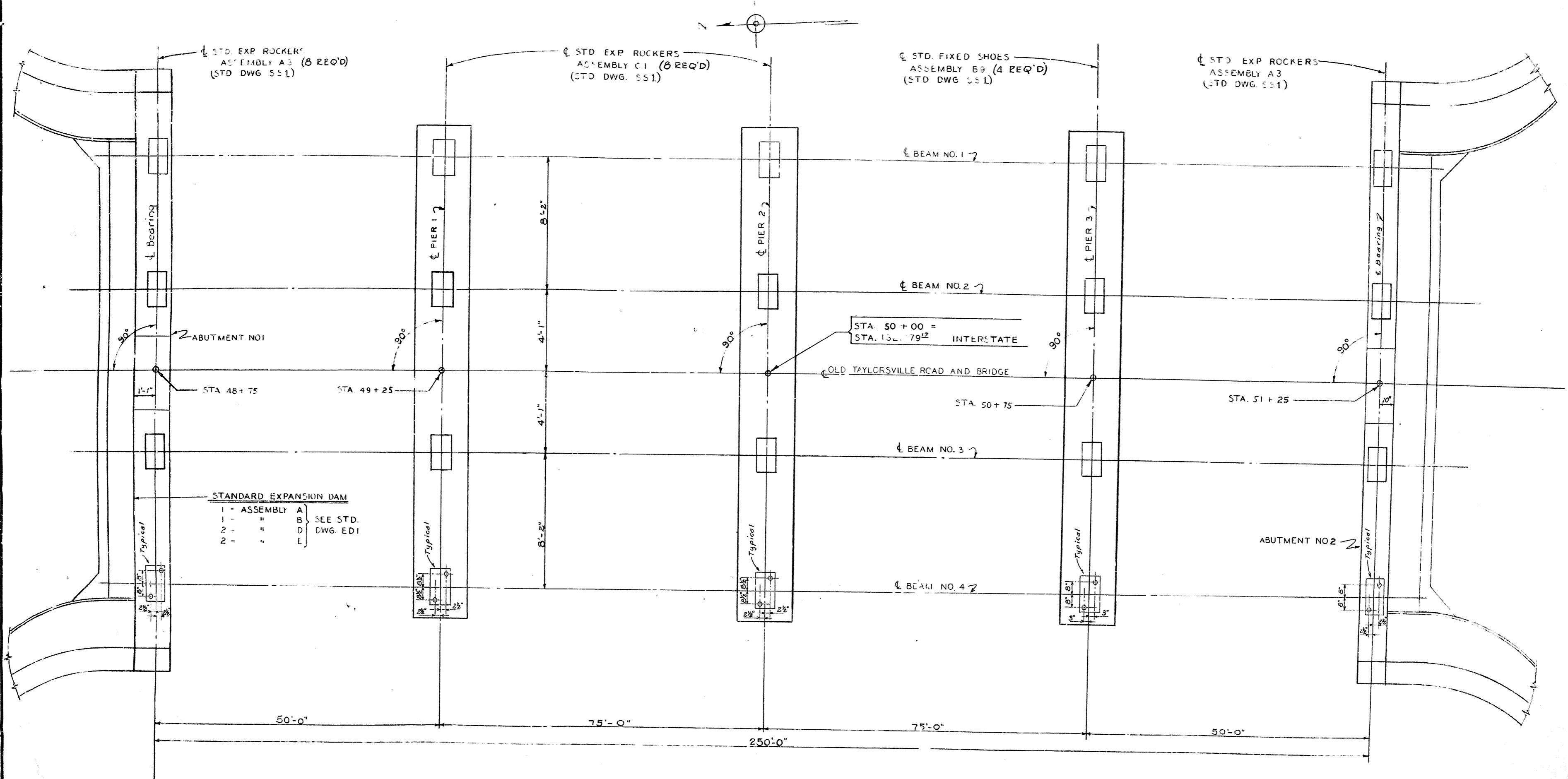
OLD TAYLORSVILLE ROAD OVERPASS SHEET 9

COMMONWEALTH OF KENTUCKY
 DEPARTMENT OF HIGHWAYS
 FRANKFORT
 COUNTY OF
SHELBY

LOUISVILLE - LEXINGTON - CATLETTSBURG
 50+00.00 ROAD
 STATION 1321+79.17 INTERSTATE PROJECT NO.

BRIDGE NUMBER _____ DRAWING NO. 13755

7	NY				
---	----	--	--	--	--



ANCHOR BOLT PLAN

NOTE: DRILLED HOLES FOR ANCHOR BOLTS TO 1 1/2" φ. FOR NOTES - SEE STD. DWG. 551.

OLD TAYLORSVILLE ROAD OVER INTERSTATE SHEET 10
COMMONWEALTH OF KENTUCKY
 DEPARTMENT OF HIGHWAYS
 FRANKFORT
 COUNTY OF
SHELBY
 LOUISVILLE - LEXINGTON - CATLETTSBURG
 ROAD
 50 + 00 =
 STATION 1321 + 79.12 INTERSTATE PROJECT NO.
 BRIDGE NUMBER
 13755
 INDEX

BY:	DATE:	BY:	DATE:
BY:	DATE:	BY:	DATE:
BY:	DATE:	BY:	DATE: